

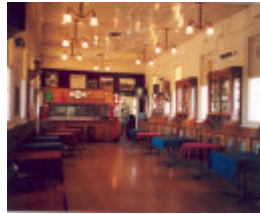
LILYDALE RAILWAY STATION REFRESHMENT ROOMS



LILYDALE RAILWAY STATION REFRESHMENT ROOMS SOHE 2008



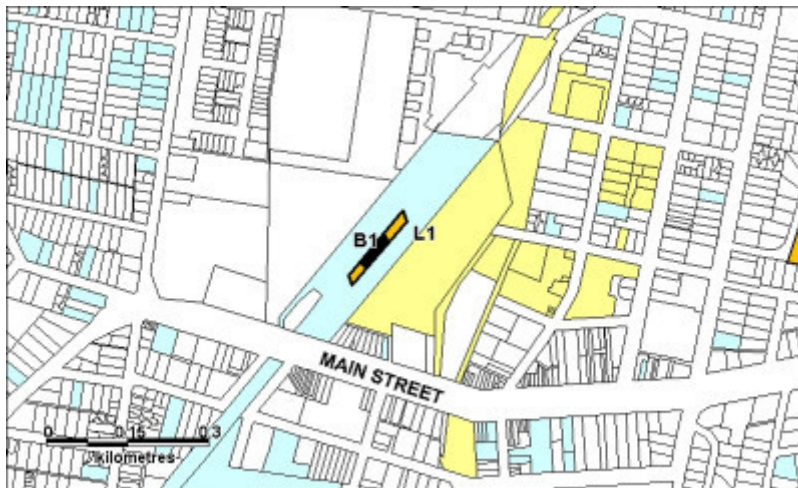
1_h02044 lilydale railway station refreshment room5



h02044 lilydale railway station refreshment room4



h02044 lilydale railway station refreshment rooms3



h02044 lilydale rs extent of registration july 2003

Location

99 MAIN STREET LILYDALE, YARRA RANGES SHIRE

Municipality

YARRA RANGES SHIRE

Level of significance

Registered

Victorian Heritage Register (VHR) Number

H2044

Heritage Overlay Numbers

HO399

VHR Registration

October 9, 2003

Heritage Listing

Victorian Heritage Register

Statement of Significance

Last updated on - October 15, 2003

What is significant?

The provision of refreshment rooms at Victorian railway stations began in the 19th century, when the only way a passenger could get any refreshment on their journey was at purpose built rooms. Refreshment rooms were set up at all major stations, most junctions and some other stations where long stops were necessary for train-watering or other running purposes. There were usually many stops on all main lines, and at least one timetabled stop on most branch lines. The last trains to make refreshment room stops were the Sunday trains to Swan Hill at Bendigo, which ceased in 1983 with the introduction of a buffet car.

The three main types of refreshment rooms were set table rooms, counter meal rooms and tea stalls. Set table rooms were generally operated as licensed dining rooms and were available at large stations and interchanges such as Bendigo, Ballarat, Geelong, Seymour and Warragul. Counter meals, also available at the larger stations, were available at other regional stations, such as Traralgon, Korong Vale, Korumburra, Castlemaine, Echuca, Warrnambool and this example at Lilydale. Counter meals were generally a hot one-course meal with beverages. The last counter meals served at country stations were Ballarat and Seymour, which ceased in 1976.

The Lilydale railway station refreshment room was opened in 1914 as part of the new railway station building. The station was a busy tourist interchange, and a large part of its trade was the day-tripper tourist crowd travelling on to Healesville, and to Warburton, the line for which branched off at Lilydale. The rooms were privately operated until 1919, when Victorian Railways took over the operation. Between 1932 and 1939 only light refreshments were served because of the depression and a downturn in passenger numbers. The rooms included a large cellar, separate bar, and the main refreshment room measuring 55ft by 20ft (about 20m x 7m), with pressed metal dados and platform serving window. Although the counters are now gone, still surviving along one side of the room are the original glass-fronted cabinets installed when the rooms were built. The rooms were operated by a staff of six or seven and adjoining rooms included kitchen, scullery, toilets and living quarters for the manager. The rooms were finally closed in 1978.

How is it significant?

The Lilydale railway station refreshment room is of historical significance to the State of Victoria.

Why is it significant?

The Lilydale railway station refreshment room is historically significant as an intact example of a type of railway infrastructure that was once an everyday experience for train travellers in Victoria. This room is significant as the last remaining refreshment room on the suburban network, and is significant in particular as a reminder of the tourist crowds that travelled to this region by train. This room was for counter meals only, and is in contrast to larger surviving dining rooms at places such as Seymour and Serviceton.

Permit Exemptions

General Exemptions:

General exemptions apply to all places and objects included in the Victorian Heritage Register (VHR). General exemptions have been designed to allow everyday activities, maintenance and changes to your property, which don't harm its cultural heritage significance, to proceed without the need to obtain approvals under the Heritage Act 2017.

Places of worship: In some circumstances, you can alter a place of worship to accommodate religious practices without a permit, but you must [notify](#) the Executive Director of Heritage Victoria before you start the works or activities at least 20 business days before the works or activities are to commence.

Subdivision/consolidation: Permit exemptions exist for some subdivisions and consolidations. If the subdivision or consolidation is in accordance with a planning permit granted under Part 4 of the *Planning and Environment Act 1987* and the application for the planning permit was referred to the Executive Director of Heritage Victoria as a determining referral authority, a permit is not required.

Specific exemptions may also apply to your registered place or object. If applicable, these are listed below. Specific exemptions are tailored to the conservation and management needs of an individual registered place or object and set out works and activities that are exempt from the requirements of a permit. Specific exemptions prevail if they conflict with general exemptions.

Find out more about heritage permit exemptions [here](#).

Specific Exemptions:

General Conditions: 1. All exempted alterations are to be planned and carried out in a manner which prevents damage to the fabric of the registered place or object. General Conditions: 2. Should it become apparent during further inspection or the carrying out of alterations that original or previously hidden or inaccessible details of the place or object are revealed which relate to the significance of the place or object, then the exemption covering such alteration shall cease and the Executive Director shall be notified as soon as possible. General Conditions: 3. If there is a conservation policy and plan approved by the Executive Director, all works shall be in accordance with it. General Conditions: 4. Nothing in this declaration prevents the Executive Director from amending or rescinding all or any of the permit exemptions. General Conditions: 5. Nothing in this declaration exempts owners or their agents from the responsibility to seek relevant planning or building permits from the responsible authority where applicable.

Exterior of building

* Minor repairs and maintenance which replace like with like.

* Removal of extraneous items such as air conditioners, pipe work, ducting, wiring, antennae, aerials etc, and making good.

Interior of building

* Painting of previously painted walls and ceilings provided that preparation or painting does not remove evidence of the original paint or other decorative scheme.

* Refurbishment of toilet facilities including removal, installation or replacement of fixtures and piping

* Refurbishment of bar area including removal or replacement of kitchen fittings and fixtures including sinks, stoves, ovens refrigerators, dishwashers etc and associated plumbing and wiring.

Construction dates 1914,
Heritage Act Categories Registered place,
Other Names Rail Museum, VRI,
Hermes Number 12647
Property Number

History

Closed 1978

Extent of Registration

1. All the land marked L1, (being the platform area) on plan H2044 held by the Executive Director.
2. All the station building marked B1 on plan H2044 held by the Executive Director.

This place/object may be included in the Victorian Heritage Register pursuant to the Heritage Act 2017. Check the Victorian Heritage Database, selecting 'Heritage Victoria' as the place source.

For further details about Heritage Overlay places, contact the relevant local council or go to Planning Schemes Online <http://planningschemes.dpcd.vic.gov.au/>