

BALLARAT POST OFFICE



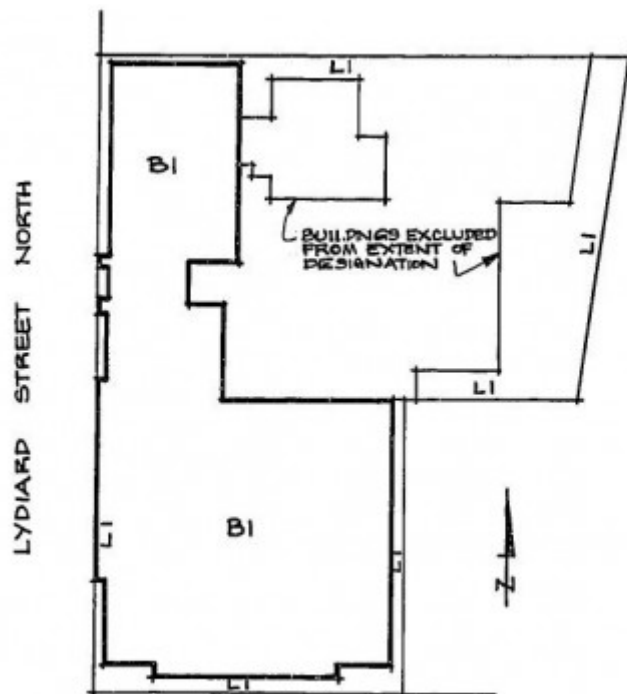
BALLARAT POST OFFICE
SOHE 2008



BALLARAT POST OFFICE
SOHE 2008



1 ballarat post office aerial
view 1992



h01018 plan h1018

Location

2-6 LYDIARD STREET NORTH BALLARAT CENTRAL, BALLARAT CITY

Municipality

BALLARAT CITY

Level of significance

Registered

Victorian Heritage Register (VHR) Number

H1018

Heritage Overlay Numbers

HO57

VHR Registration

April 21, 1994

Heritage Listing

Victorian Heritage Register

Statement of Significance

Last updated on - May 4, 1999

The Ballarat Post Office is the third such building erected on the site since 1858. The earliest section, designed in Italianate palazzo style by the Public Works Department during William Wardell's tenure as Inspector-General and Chief Architect, opened in 1864. A telegraph office and treasury was added to the Lydiard street north frontage in 1871, followed by further offices and a clock tower in 1885.

The Ballarat Post Office is an extraordinary exemplar of the financial activities of the Colony's largest non-metropolitan economy. It was the centre of its fiscal and communications networks, demonstrated by both its location, physical context and its size.

It is a representative and an essentially intact example of a building type - a purpose-built and substantial example of a major Victoria post office, the second largest outside the Melbourne GPO. The Post Office is now part of the Camp Street Campus, of the University of Ballarat.

The building is a representative and early example of the work of renowned Public Works Department architect, William Wardell.

Permit Exemptions

General Exemptions:

General exemptions apply to all places and objects included in the Victorian Heritage Register (VHR). General exemptions have been designed to allow everyday activities, maintenance and changes to your property, which don't harm its cultural heritage significance, to proceed without the need to obtain approvals under the Heritage Act 2017.

Places of worship: In some circumstances, you can alter a place of worship to accommodate religious practices without a permit, but you must [notify](#) the Executive Director of Heritage Victoria before you start the works or activities at least 20 business days before the works or activities are to commence.

Subdivision/consolidation: Permit exemptions exist for some subdivisions and consolidations. If the subdivision or consolidation is in accordance with a planning permit granted under Part 4 of the *Planning and Environment Act*

1987 and the application for the planning permit was referred to the Executive Director of Heritage Victoria as a determining referral authority, a permit is not required.

Specific exemptions may also apply to your registered place or object. If applicable, these are listed below. Specific exemptions are tailored to the conservation and management needs of an individual registered place or object and set out works and activities that are exempt from the requirements of a permit. Specific exemptions prevail if they conflict with general exemptions.

Find out more about heritage permit exemptions [here](#).

| | |
|-------------------------|----------------------|
| Construction dates | 1864, |
| Architect/Designer | Wardell, William W., |
| Heritage Act Categories | Registered place, |
| Hermes Number | 1364 |
| Property Number | |

Extent of Registration

AMENDMENT OF REGISTER OF HISTORIC BUILDINGS

Historic Building No. 1018.

Post Office, corner Sturt Street and Lydiard Street North, Ballarat.

(To the extent of:

1. All of the building known as the Ballarat Post Office marked B-1 on Plan 6001887 (A), endorsed by the Chairperson, Historic Buildings Council and held by the Director, Historic Buildings Council.
2. All of the land marked L1 on Plan 6001887 (A), endorsed by the Chairperson, Historic Buildings Council and held by the Director, Historic Buildings Council, being all the land described in Certificate of Title Volume 7438, Folio 529.)

[*Victoria Government Gazette* No. G16 21 April 1994 pp.1003-1004]

This place/object may be included in the Victorian Heritage Register pursuant to the Heritage Act 2017. Check the Victorian Heritage Database, selecting 'Heritage Victoria' as the place source.

For further details about Heritage Overlay places, contact the relevant local council or go to Planning Schemes Online <http://planningschemes.dpcd.vic.gov.au/>