
COMMONWEALTH FERTILISERS WHARVES AND ASSOCIATED LAND



Commonwealth Fertilisers
Wharves Maribyrnong July
2003



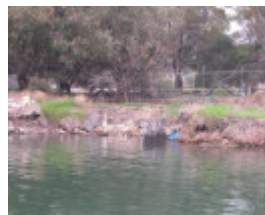
Commonwealth Fertilisers
Wharves Maribyrnong July
2003 Commonwealth
Fertilisers Factory



Commonwealth Fertilisers
Wharves Maribyrnong July
2003 Iron Sheet Piling 001



Commonwealth Fertilisers
Wharves Maribyrnong July
2003 Iron Sheet Piling 002



Commonwealth Fertilisers
Wharves Maribyrnong July
2003 Iron Sheet Piling 003



Commonwealth Fertilisers
Wharves Maribyrnong July
2003 Wharf And Bollards

Location

221-267 WHITEHALL STREET YARRAVILLE, MARIBYRNONG CITY

Municipality

MARIBYRNONG CITY

Level of significance

Heritage Inventory Site

Heritage Inventory (HI) Number

H7822-0528

Heritage Listing

Interpretation of Site	<p>The timber sheet piling may date to 1910. Evidence of former timber wharf structure can also be seen in areas of gaps in the bluestone beaching which now lines the river frontage of the site. It is probable that large sections of wharf structure, particular the wharf ties and landward most sections, still exist under the extensive bluestone beaching. Further terrestrial based investigation is required to verify this observation.</p> <p>The site is significant as one of the first fertiliser industries in the Yarraville Region, and socially significant as a major employer in the area.</p> <p>The finger piers had been removed by Nov 2004</p>
Other Names	CUMMINGS CHEMICAL WORKS PIER, BALLAST QUARRY PIERS, RALEIGH'S SALTING WORKS PIER, MACMEIKAN AND CO'S ANIMAL GUANO AND CONVERTING WORKS AND JETTY,
Hermes Number	13793
Property Number	

History

Lying to the area south of Somerville Road is the site of the former Commonwealth Fertiliser Factory Wharves. Two wharves, probably associated with nearby quarries were already in existence at this location in 1844, when Joseph Raleigh established a salting works at this location in the same year. Raleigh's Salting Works is shown in 1844 with an associated wharf. James Macmeikan and Company moved to this area after he was hounded out of his Flemington Bone Mills by the Council in 1871. He established an Animal Guano and Converting Works on this site, which became the catalyst for Victorian fertiliser industry at Yarraville. The site has been consecutively occupied by Cummings and Smith's acid and Fertiliser Works, Commonwealth Fertiliser Works, and is the current home of the Pivot Fertiliser works. Cummings Smith and Company pioneered the production of superphosphate at their sulphuric acid works in 1872, which led to a thriving trade with Mauritius in exchange for sugar. The individual wharf built to service the factory was replaced by a continuous line of wharves at Yarraville between the late 1870's and 1900, when the MHT took over responsibility for port berthing facilities. When the Mt Lyell Mining and Railway Company entered the sulphuric acid trade, it purchased the site at Yarraville to produce superphosphate in 1905. The Commonwealth Fertiliser and Chemical Works were formed in 1929, and continued use of the site for fertiliser production. The wharf has been extensively used for the importation of guano produce from Nauru, an essential component of the fertiliser production process. This area of wharf is locally known as wharves # 1- 4 .

This place/object may be included in the Victorian Heritage Register pursuant to the Heritage Act 2017. Check the Victorian Heritage Database, selecting 'Heritage Victoria' as the place source.

For further details about Heritage Overlay places, contact the relevant local council or go to Planning Schemes Online <http://planningschemes.dpcd.vic.gov.au/>