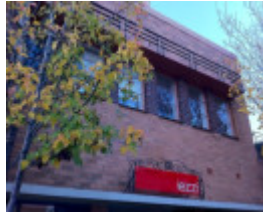


---

## FLATS, SHOPS AND OFFICES



921-923 High Street,  
Armadale (2).jpeg



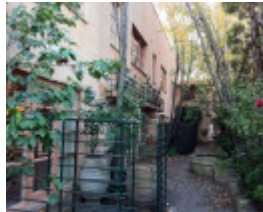
921-923 High Street,  
Armadale



Flats & shops, 921 High  
Street



Flats & shops, 921 High  
Street



IMG\_0908.jpeg

---

### Location

921-923 High Street ARMADALE, STONNINGTON CITY

### Municipality

STONNINGTON CITY

### Level of significance

Incl in HO area indiv sig

### Heritage Overlay Numbers

HO400

### Heritage Listing

Stonnington City

---

## Statement of Significance

Last updated on -

This place was reviewed by *Residential Flats Study Stage 2* (Context, 2011) and is recommended for detailed assessment in Stage 3. It is of potential significance:

As a good example of the Moderne style

As a design by Seabrook & Fildes

As an example of the Combined Function type

Heritage Study/Consultant	Stonnington - City of Stonnington Heritage Overlay Gap Study - Heritage Overlay Precincts Final Report, Bryce Raworth P/L, 2009; Stonnington - Residential Flats in Stonnington - Heritage Citations Project, Context P/L, 2013;
Construction dates	1938,
Architect/Designer	Seabrook & Fildes,
Other Names	Combined function flats,
Hermes Number	139386
Property Number	

---

## Physical Description 1

Double-storey interwar offices/flats.

*This place/object may be included in the Victorian Heritage Register pursuant to the Heritage Act 2017. Check the Victorian Heritage Database, selecting 'Heritage Victoria' as the place source.*

*For further details about Heritage Overlay places, contact the relevant local council or go to Planning Schemes Online <http://planningschemes.dpcd.vic.gov.au/>*