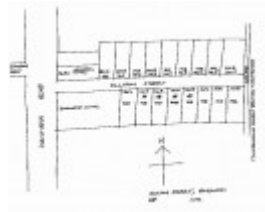
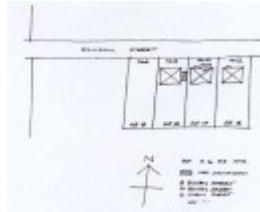

House



Ellison St 08



Ellison St 08



Ellison St 08

Location

8 Ellison Street RINGWOOD, MAROONDAH CITY

Municipality

MAROONDAH CITY

Level of significance

Included in Heritage Overlay

Heritage Overlay Numbers

HO98

Heritage Listing

Maroondah City

Statement of Significance

Last updated on -

A double-fronted timber Bungalow, built in 1923. It is historically significant locally as physical evidence of family life in the inter-war period in Ringwood and as one of several in this street (possibly) built by local builder Harry Peake including no's 4 and 6, and probably 10, but this house was built by Peake as his own residence. It is architecturally significant as an exemplar of this domestic style.

Heritage Study/Consultant	Maroondah - Maroondah Heritage Study, Richard Peterson Architect & Conservation Consultant, 2010;
Hermes Number	146722
Property Number	

Physical Description 1

Double-fronted timber Bungalow with a pyramidal hipped-roof. The left and centre bays are recessed as the verandah, beneath the hip. This is supported by a broad bressumer, over a rendered cylindrical pylon at the external angle over a plate-capped brick pier on the splay. A brick balustrade extends to a pier at the central entrance with a standard spherical lamp on a wrought iron stand. At right is a canted bay window with timber shingle fascia, under the hip. The roof is clad with glazed Marseilles pattern tiles and rafters are exposed.

Intactness

Excellent. A sympathetic gabled carport has been recently added at left. The timber palisade picket fence is recent, anachronistic and not appropriate. Paint colours are appropriate.

Physical Conditions

Excellent.

This place/object may be included in the Victorian Heritage Register pursuant to the Heritage Act 2017. Check the Victorian Heritage Database, selecting 'Heritage Victoria' as the place source.

For further details about Heritage Overlay places, contact the relevant local council or go to Planning Schemes Online <http://planningschemes.dpcd.vic.gov.au/>