

---

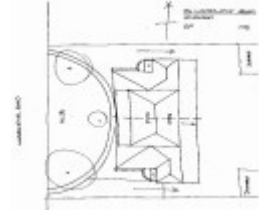
## Two semi-detached dwellings



2 semi-detached houses



2 semi-detached houses



2 semi-detached houses

---

### Location

76 and 76A Warrandyte Road RINGWOOD, MAROONDAH CITY

### Municipality

MAROONDAH CITY

### Level of significance

Included in Heritage Overlay

### Heritage Overlay Numbers

HO129

### Heritage Listing

Maroondah City

---

### Statement of Significance

Last updated on -

An unusual large Moderne semi-detached villa pair, built at the very late date of 1953. It is historically significant locally in embodying an unusual approach to post-war population explosion in family life and architecturally as a particularly intact late Moderne domestic building, with many contextual elements surviving.

Heritage Study/Consultant	Maroondah - Maroondah Heritage Study, Richard Peterson Architect & Conservation Consultant, 2010;
Hermes Number	146879
Property Number	

---

## Physical Description 1

A large Moderne semi-detached villa pair, constructed in 1953, with single and double-storied sections. All is constructed in clinker-brick, with glazed Marseilles-pattern tiled hipped roofs. There are four bays facing, the two central bays are recessed, with large, symmetrical windows which consist of sashes, fixed pane, and French doors at centre. Over these is a reinforced concrete balcony and balustrade, supported on a central pier and side wing walls, with Moderne bracket lamps. It has an Art Deco 'wings' motif embossed bas relief, with a 'wrought iron' balustrade, with a rand and pointed arch motif in an Art Deco design. the central first floor are French pairs with fixed panels below. centre is a rectangular chimney. Side wings have Chicago windows. All windows are steel-framed, with three horizontal glazing bars.

Entrances are located at sides, in a further bay, set well back. Both side porches have 'wrought iron' screens. The terrace at front of the central bays is paved in green and white terrazzo. The front fence is in the balustrade motif, as have the side porches. (Another length is mounted on the side boundary fence). The garden is laid out with a round drive-thru driveway, edged with Castlemaine slates, crazy-paving. There are three major trees.

## Intactness

Excellent. The garage is recent.

## Physical Conditions

Excellent.

*This place/object may be included in the Victorian Heritage Register pursuant to the Heritage Act 2017. Check the Victorian Heritage Database, selecting 'Heritage Victoria' as the place source.*

*For further details about Heritage Overlay places, contact the relevant local council or go to Planning Schemes Online <http://planningschemes.dpcd.vic.gov.au/>*