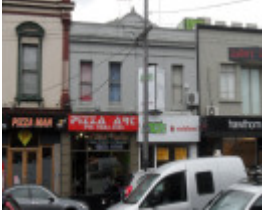

633 Burwood Road



631-633 Burwood Road

Location

633 Burwood Road HAWTHORN, BOROONDARA CITY

Municipality

BOROONDARA CITY

Level of significance

Incl in HO area contributory

Heritage Overlay Numbers

HO260

Heritage Listing

Boroondara City

Statement of Significance

Last updated on -

Status within precinct reviewed by Context Pty Ltd in 2012:

This building is a two-storey rendered Victorian shop which forms a pair with No. 631. The pair was given C-grade in 1992 Hawthorn Study, and a Contributory grade in 2005 Context Auburn Village study. The buildings fit into the period of significance of the precinct (1885-1910) and accord with general description of contributory buildings. Also the current citation notes that the Burwood Road buildings are less intact than those on Auburn Rd (like this one - which has a new shopfront, but is intact above).

Grading should be corrected for Nos 631-633 to Contributory to the precinct.

HO260 Auburn Village Precinct, Hawthorn

Reference - *Auburn Village Heritage Study Heritage Guidelines (2005)*

The Auburn Village Precinct, Hawthorn, is an area of cultural heritage significance for the following reasons:

- The precinct is a representative example of a major commercial precinct of late 19th and early 20th century.
- The precinct demonstrates the important influence of railways by encouraging the development of commercial centres around stations, and illustrates the speculative development boom in Hawthorn during the late nineteenth century before the on-set of the 1890s depression.
- The scale and grandeur of a number of the shops, particularly the three storey shops at 132-142 and 144-148 Auburn Road, reflect the importance of Auburn Village (and the middle class aspirations of Hawthorn at the time) as one of three major shopping centres in Hawthorn during the nineteenth century, and illustrates the type of development characterising a wealthy and dynamic city that led to the description 'Marvellous Melbourne'.
- The precinct is especially notable for the very intact late nineteenth century commercial streetscape in Auburn Road, which includes a remarkable collection of often elaborate and richly ornamented late Victorian shop rows that are complemented by a number of landmark buildings including the Auburn Hotel, Auburn Railway Station, and the three storey shop rows on the west side of the street.
- Many of the early shops within the precinct were designed by the noted local architect John Beswicke, who also designed the Hawthorn Town Hall.
- Burwood Road, while less intact, includes groups of commercial shop rows with common siting, scale, fenestration, and ornament that create relatively cohesive and homogeneous streetscapes that provide an appropriate context.

Heritage Study/Consultant	Boroondara - Individual Site Assessments 2012, Boroondara Council, 2012; Boroondara - Auburn Village Heritage Study, Context P/L, 2005; Boroondara - Hawthorn Heritage Study, Meredith Gould Conservation Architects, 1993;
Hermes Number	150142
Property Number	

This place/object may be included in the Victorian Heritage Register pursuant to the Heritage Act 2017. Check the Victorian Heritage Database, selecting 'Heritage Victoria' as the place source.

For further details about Heritage Overlay places, contact the relevant local council or go to Planning Schemes Online <http://planningschemes.dpcd.vic.gov.au/>