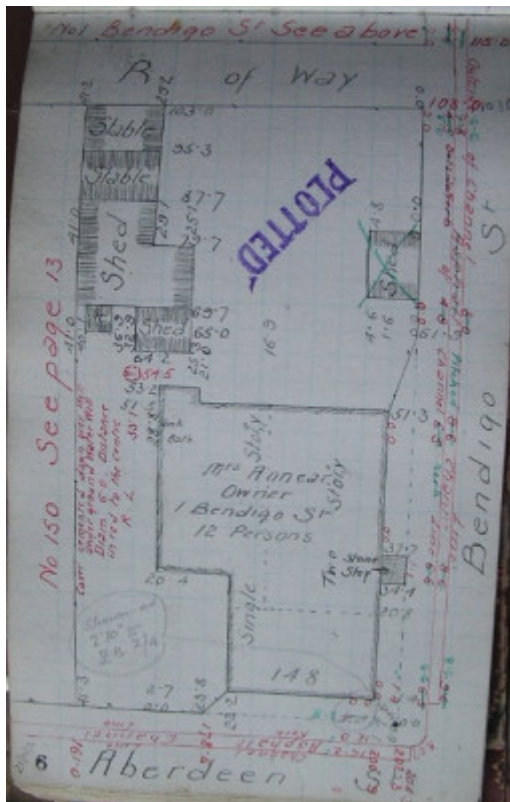


Residence - Rear of (Shop)



148 Aberdeen Street,
Geelong West



GWST Fieldbook, no. 172, p.9, 21 November 1912.

Location

148 Aberdeen Street, GEELONG WEST VIC 3218 - Property No 200200

Municipality

GREATER GEELONG CITY

Level of significance

Incl in HO area indiv sig

Heritage Overlay Numbers

HO634

HO1959

Heritage Listing

Greater Geelong City

Statement of Significance

Last updated on -

STATE SIGNIFICANCE - INCLUDED IN HERITAGE PRECINCT

STATEMENT OF SIGNIFICANCE

The simple Georgian style of this two storey building in Bendigo Street is unique in Geelong. This style was rarely used in Victoria and is more often associated with the early nineteenth century buildings of Tasmania. The front facade abuts the street boundary and it is the only two storey residence in Geelong West to indicate its 1850s origins in this manner. It is of State significance .

POLICY RECOMMENDATIONS : Historic Buildings Register, National Estate Register, Geelong Regional Planning Scheme.

Removal of the paint from the brickwork, by an approved method, twelvelight windows upstairs, would greatly enhance the building.

References

REFERENCES Kardinia Ward Rate Book 1855-6

Villamanta Ward Rate Book 1860-1

Villamanta Ward Valuation Book 186-01.

Heritage Study/Consultant	Greater Geelong - City of Geelong West Urban Conservation Study, Huddle, Aitken and Honman, 1986; Greater Geelong - Ashby Heritage Review, D Rowe and W Jacobs, 2010;
Heritage Act Categories	Registered place,
Hermes Number	15315
Property Number	

Physical Description 1

Situated on the eastern boundary of the block, this two storey brick building has a gabled, slate covered roof. It has a simple rectangular form and symmetrically placed openings .in the front elevation. The centrally placed doorway is round arched and deeply recessed. There is a semicircular fixed light above the door and it is accented by the voussoirs of the round arch. Either side of the doorway are rectangular openings for the twelve pane sash windows. On the upper floor are three more identical windows placed directly above the three ground floor openings. Each of the windows has flat arched voussoirs and Alterations have included replacement upstairs of lights only, and the brickwork has been painted. been keyed to allow for an extension to be added Tasmania than in Victoria.

This place/object may be included in the Victorian Heritage Register pursuant to the Heritage Act 2017. Check the Victorian Heritage Database, selecting 'Heritage Victoria' as the place source.

For further details about Heritage Overlay places, contact the relevant local council or go to Planning Schemes Online <http://planningschemes.dpcd.vic.gov.au/>