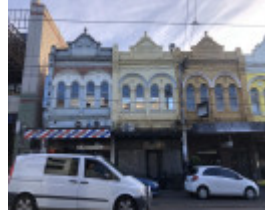


---

## 13 Glenferrie Road, MALVERN



13 and 15 Glenferrie Road,  
Malvern



13-17 Glenferrie Road,  
Malvern

---

### Location

13 Glenferrie Road, MALVERN VIC 3144 - Property No 20891

### Municipality

STONNINGTON CITY

### Level of significance

Incl in HO area Significant

### Heritage Overlay Numbers

HO349

### Heritage Listing

Stonnington City

---

Heritage Study/Consultant	Stonnington - City of Stonnington - Heritage Precincts - Intact Shop Fronts Survey 2011, Context P/L, 2011;
Hermes Number	153685
Property Number	

---

## Physical Description 1

Pepperell's buildings. One of a group of eight two-storey shops constructed c 1889.

### Shopfront

Intact elements: c1920: ornate metal frame, leadlight highlights, glazed timber door.

*This place/object may be included in the Victorian Heritage Register pursuant to the Heritage Act 2017. Check the Victorian Heritage Database, selecting 'Heritage Victoria' as the place source.*

*For further details about Heritage Overlay places, contact the relevant local council or go to Planning Schemes Online <http://planningschemes.dpcd.vic.gov.au/>*