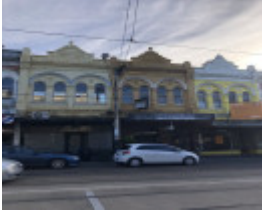


---

# 15 Glenferrie Road, MALVERN



15 and 17 Glenferrie Road,  
Malvern

---

## Location

15 Glenferrie Road, MALVERN VIC 3144 - Property No 13441

## Municipality

STONNINGTON CITY

## Level of significance

Incl in HO area Significant

## Heritage Overlay Numbers

HO349

## Heritage Listing

Stonnington City

---

Heritage Study/Consultant	Stonnington - City of Stonnington - Heritage Precincts - Intact Shop Fronts Survey 2011, Context P/L, 2011;
Hermes Number	153686
Property Number	

---

## Physical Description 1

Pepperell's buildings. One of a group of eight two-storey shops constructed c 1889.

### Shopfront

Intact elements: 1930s: model metal frame, decorative highlights, glazed timber door, pressed metal soffit and terrazzo floor to splayed entry.

*This place/object may be included in the Victorian Heritage Register pursuant to the Heritage Act 2017. Check the Victorian Heritage Database, selecting 'Heritage Victoria' as the place source.*

*For further details about Heritage Overlay places, contact the relevant local council or go to Planning Schemes Online <http://planningschemes.dpcd.vic.gov.au/>*