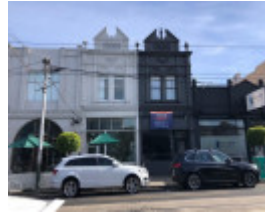


---

# 1207 High Street, ARMADALE



1207 High Street, Armadale



1207 High Street, Armadale

---

## Location

1207 High Street, ARMADALE VIC 3143 - Property No 2532

## Municipality

STONNINGTON CITY

## Level of significance

Incl in HO area Significant

## Heritage Overlay Numbers

HO349

## Heritage Listing

Stonnington City

---

Heritage  
Study/Consultant

Stonnington - City of Stonnington - Heritage Precincts - Intact Shop Fronts Survey  
2011, Context P/L, 2011;

Hermes Number

153913

Property Number

---

## Physical Description 1

One of a pair of two-storey Victorian shops.

### Shopfront

Intact elements: Part timber frame with arch detail, highlights, panelled door, lining boards to entry soffit.

*This place/object may be included in the Victorian Heritage Register pursuant to the Heritage Act 2017. Check the Victorian Heritage Database, selecting 'Heritage Victoria' as the place source.*

*For further details about Heritage Overlay places, contact the relevant local council or go to Planning Schemes Online <http://planningschemes.dpcd.vic.gov.au/>*