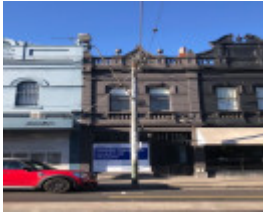


---

## 1210-1212 High Street, ARMADALE



1210 High Street, Armadale



1212 High Street, Armadale

---

### Location

1210-1212 High Street, ARMADALE VIC 3143 - Property No 54052

### Municipality

STONNINGTON CITY

### Level of significance

Incl in HO area indiv sig

### Heritage Overlay Numbers

HO349

### Heritage Listing

Stonnington City

---

Heritage  
Study/Consultant

Stonnington - City of Stonnington - Heritage Precincts - Intact Shop Fronts Survey  
2011, Context P/L, 2011;

Hermes Number

153916

Property Number

---

## Physical Description 1

Lindley's buildings. One of a group of three Victorian shops with original shop fronts. Tormey's buildings. Two-storey Victorian shop with original shop front

### Shopfront

Intact elements: 1210: Timber frame and arched highlights, panelled door, panelled soffit to splayed entry.

*This place/object may be included in the Victorian Heritage Register pursuant to the Heritage Act 2017. Check the Victorian Heritage Database, selecting 'Heritage Victoria' as the place source.*

*For further details about Heritage Overlay places, contact the relevant local council or go to Planning Schemes Online <http://planningschemes.dpcd.vic.gov.au/>*