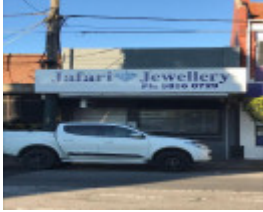


---

# 138 Burke Road, MALVERN EAST



138 Burke Road, Malvern East

---

## Location

138 Burke Road, MALVERN EAST VIC 3145 - Property No 10025

## Municipality

STONNINGTON CITY

## Level of significance

Incl in HO area Significant

## Heritage Overlay Numbers

HO353

## Heritage Listing

Stonnington City

---

## Statement of Significance

Last updated on -

*Part of the Central Park Shopping Centre Precinct*

The Central Park shops were established to cater mainly for the needs of local residents in this rapidly developing East Malvern area, but also for visitors to Central Park. The Wattle Tree Road tram had a direct impact on the development of the area, and in particular the establishment of the shops.

The Central Park shops are of social significance as they play an important role in the community and in their relationship to the adjacent tram line and Central Park. In their context, they illustrate the typical early twentieth century interdependence between the development of suburban housing, recreation facilities, public transport and the smaller shopping strip.

The precinct is important for the degree to which it retains its building stock, scale and general character from the 1910s, 1920s and 1930s, undiluted by more recent development. It is a fine and representative exemplar of typical suburban commercial properties of these decades. The location of the precinct, intermediate between Central Park and the Gascoigne, Ranfurly, Hedgeley Dene and Valentine Estates, adds to its importance, and renders it crucial to an appreciation of the development of these significant contingent areas.

*(Bryce Raworth Pty Ltd 1998)*

|                           |   |
|---------------------------|---|
| Heritage Study/Consultant | Stonnington - City of Stonnington Heritage Overlay Report (Stages 1-5) 1998, Bryce Raworth P/L, 1998; |
| Hermes Number             | 154485  |
| Property Number           |   |

---

## Physical Description 1

"This single-storey building has been extensively modified. It was originally constructed as a group of three shops with recessed entries unified by an elaborately modelled parapet treatment. Today it appears as three unrelated shops. No 138 has been so extensively modified that little of the original fabric is visible. The facade and verandah have been reclad and the shop front has been replaced. No 140 has retained the original, decorative inserts and capping to its parapet and the shopfront has been altered but the shop retains its original form. No 142 has retained a stylised garland device, realised in cement render, on the parapet but the shopfront has been rebuilt in recent decades and the brickwork painted. The group 138-142 contributes to the streetscape largely through its scale and its massing. Building plan No. 2942 held in the Malvern Building Plan Collection indicate that the group was designed by Schreiber and Jorgenson in 1921."

*This place/object may be included in the Victorian Heritage Register pursuant to the Heritage Act 2017. Check the Victorian Heritage Database, selecting 'Heritage Victoria' as the place source.*

*For further details about Heritage Overlay places, contact the relevant local council or go to Planning Schemes Online <http://planningschemes.dpcd.vic.gov.au/>*