

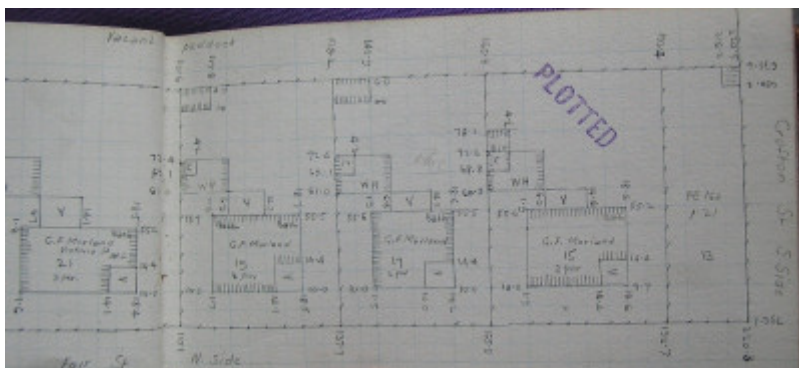
Residence



15 George Street, Geelong West



Source: Aitken, Honman & Huddle, 'City of Geelong West Urban Conservation Study', 1986.



GWST Fieldbook, no. 189, p.25, c.1915.

Location

15 George Street, GEELONG WEST VIC 3218 - Property No 202096

Municipality

GREATER GEELONG CITY

Level of significance

Incl in HO area indiv sig

Heritage Overlay Numbers

HO682

HO1958

Heritage Listing

Greater Geelong City

Statement of Significance

Last updated on -

LOCAL SIGNIFICANCE - INCLUDED IN HERITAGE PRECINCT

STATEMENT OF SIGNIFICANCE

A unique group of eight MODEST, SINGLE FRONTED Edwardian houses built in timber. Six of the eight have a high degree of integrity. They are of local significance.

References

Borough of Geelong West Rate Book, 1913-14.

Sands and McDougall Directory, 1916.

Heritage Study/Consultant	Greater Geelong - City of Geelong West Urban Conservation Study, Huddle, Aitken and Honman, 1986; Greater Geelong - Ashby Heritage Review, D Rowe and W Jacobs, 2010;
Heritage Act Categories	Registered place,
Hermes Number	15711
Property Number	

Physical Description 1

This row of near identical single fronted houses is unique in Geelong West. They are single storey timber framed houses clad in weatherboards and the hipped and gabled roofs are clad in corrugated iron. The simple Edwardian buildings have an asymmetrical front elevation composed of a gable end and the side entrance with a porch. There are few decorative elements but these have been used effectively on the small buildings. They include a simple projecting gablet with supporting brackets, decorative eaves brackets, window hood with brackets and the timber column and fretwork on the porch. The only apparent variation between these houses can be seen in the timber fretwork and brackets. Six of the eight houses have high degree of integrity.

This place/object may be included in the Victorian Heritage Register pursuant to the Heritage Act 2017. Check the Victorian Heritage Database, selecting 'Heritage Victoria' as the place source.

For further details about Heritage Overlay places, contact the relevant local council or go to Planning Schemes Online <http://planningschemes.dpcd.vic.gov.au/>