

68 Victoria Street



Victoria Street



Victoria Street



Victoria Street



Victoria Street



Victoria Street



Victoria Street



Victoria Street



Victoria Street



Victoria Street



Victoria Street



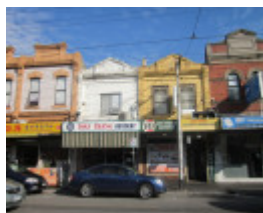
Victoria Street



Victoria Street



Victoria Street



Victoria Street



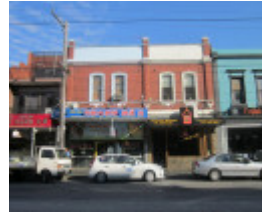
Victoria Street



Victoria Street



Victoria Street



Victoria Street

Location

68 VICTORIA STREET RICHMOND, YARRA CITY

Municipality

YARRA CITY

Level of significance

Incl in HO area contributory

Heritage Overlay Numbers

HO408

Heritage Listing

Yarra City

Statement of Significance

Last updated on - July 4, 2023

What is significant?

The Victoria Street Precinct is located on the south side of Victoria Street, Richmond. The precinct is linear in nature, following the alignment of Victoria Street between Shelley Street to the west and several properties short of Lennox Street to the east; Little Butler Street is to the rear. The precinct comprises historic commercial/retail buildings, the majority of which are two-storey rendered masonry and brick buildings, with several single-storey buildings at the west end. The buildings date from the second half of the nineteenth century through to the 1910s. Buildings in the precinct are predominantly of 'contributory' heritage value; with one 'individually significant' property (pair of two-storey Victorian shop/residences at 92-94 Victoria Street); and two 'not-contributory' properties. The graded properties of the precinct share many characteristics, including rendered masonry and brick buildings, many overpainted, of (mainly) two-storey scale; no setbacks to the street; typically concealed or partly concealed roof forms, with some visible chimneys; generally intact upper (first floor) facades with parapets which are variously plain or curved, with some triangular or square pediments; some elaborate detailing to parapets; and original first floor windows associated with the former residences above the ground floor shops. The shopfronts are typically altered, with many of quite recent origin; awnings over the street (cantilevered or suspended with tie rods) are also commonly not original. Signage varies in impact and prominence: signs are attached to the fascias of awnings; to parapets, first floor facades and the roofs of verandahs and awnings; and in painted form to shop windows. Many of the properties also have rear service yards, with annexes, skillions and outbuildings being common, accessed via Little Butler Street.

How is it significant?

The Victoria Street Precinct is of local historical and aesthetic/architectural significance.

Why is it significant?

The Victoria Street Precinct is of local historical significance. The street forms the boundary between Richmond and Abbotsford, and was originally known as Simpson's Road. It began to develop a commercial and retail character in the mid-nineteenth century, a pattern which was consolidated by the 1880s when there was a significant increase in the number of businesses. By the end of the century, many of the existing buildings had been constructed. Victoria Street has subsequently continued as a local retail and service precinct for Richmond and Abbotsford, albeit with the mix of businesses, and the commercial character of the precinct changing in the period since the Second World War. This was in response to waves of migrant groups moving to the area, including people from South East Asia who from the 1970s to the present have operated numerous restaurants, green grocers and grocery shops. The colourful retail character of the street, and the rich collection of restaurants, draws customers from all over Melbourne. The Victoria Street Precinct is also of local aesthetic/architectural significance. It has a comparatively high level of intactness to the collection of nineteenth and early twentieth century buildings, concentrated in the first floor facades. The predominantly two-storey scale, combined with the generally consistent and repetitive pattern of parapeted first floor facades, generates a high level of cohesion and homogeneity. The mix of single and paired buildings also adds to the character of the precinct. In addition, the precinct demonstrates some of the principal characteristics of late nineteenth and early twentieth century commercial/retail streets. These include many two-storey historic masonry buildings, which combine retail and residential components; zero setbacks to the street; shopfronts at ground floor level (albeit mostly altered to their original form); awnings; and a preponderance of intact first floor facades, with solid walls, punched rectangular windows, and often prominent parapets. The latter are variously plain or curved, with some triangular or square pediments, and elaborate detailing.

Theme

5. Building Victoria's industries and workforce

Heritage Study/Consultant	Yarra - Heritage Gap Study, Graeme Butler & Associates, 2007; Yarra - City of Yarra Heritage Gaps Study 2012 (Heritage Gaps Amendment two), Lovell Chen, 2012;
Hermes Number	162849
Property Number	

Intactness

Fair

Integrity

[See also the Schedule of Properties attached to this citation].

The Victoria Street Precinct is located on the south side of Victoria Street, Richmond, which is an east-west road that marks the border between Richmond (south) and Abbotsford (north). The precinct is linear in nature, and follows the alignment of Victoria Street between Shelley Street to the west and several properties short of Lennox Street to the east; Little Butler Street is to the rear.

The precinct comprises historic commercial/retail buildings, the majority of which are two-storey rendered masonry and brick buildings, with several single-storey buildings at the west end. The buildings date from the second half of the nineteenth century through to the 1910s.

Buildings in the precinct are predominantly of 'contributory' heritage value; with one 'individually significant' property (pair of two-storey Victorian shop/residences at 92-94 Victoria Street); and two 'not-contributory' properties. The latter are included in the precinct due to their location between adjoining 'contributory' properties.

The gradings of the properties in the precinct are defined in Yarra's Clause 22.02 'Development guidelines for sites subject to the Heritage Overlay', as follows:

Individually significant: The place is a heritage place in its own right. Within a Heritage Overlay applying to an area each individually significant place is also Contributory.

Contributory: The place is a contributory element within a larger heritage place. A contributory element could include a building, building groups and works, as well as building or landscape parts such as chimneys, verandahs, wall openings, rooflines and paving.

Not contributory: The place is not individually significant and not contributory within the heritage place.

The 'individually significant' and 'contributory' buildings of the precinct share many similar characteristics. These include rendered masonry and brick buildings, many overpainted, of (mainly) two-storey scale; no setbacks to the street; typically concealed or partly concealed roof forms, with some visible chimneys; generally intact upper (first floor) facades with parapets which are variously plain or curved, with some triangular or square pediments; some elaborate detailing to parapets; and original first floor windows associated with the former residences in the levels over the ground floor shops. The shopfronts are typically altered, with many of quite recent origin; awnings over the street (cantilevered or suspended with tie rods) are also commonly not original. Signage varies in impact and prominence: signs are attached to the fascias of awnings; to parapets, first floor facades and the roofs of verandahs and awnings; and in painted form to shop windows. Many of the properties also have rear service yards, with annexes, skillions and outbuildings being common, accessed via Little Butler Street.

The 'individually significant' property at 92-94 Victoria Street is however distinguished in the precinct context. It is a pair of Victorian shops and residences which is wider than usual, and retains a rich collection of original details to the first floor facade. These include triangular pediments with scrolled consoles, and moulded stringcourses incorporating decorative sills and architraves to the six windows at first floor level. The timber-framed ground floor shopfronts with recessed entries appear original, including the bluestone plinths, or may have been reconstructed sympathetically. The verandah appears to have been rebuilt although the cast iron posts may be early elements.

The buildings identified as 'not-contributory' in the precinct are also nineteenth century buildings. However, they have been heavily altered, more so than other buildings in the precinct, and to the extent that their historic character and form has been significantly compromised.

This place/object may be included in the Victorian Heritage Register pursuant to the Heritage Act 2017. Check the Victorian Heritage Database, selecting 'Heritage Victoria' as the place source.

For further details about Heritage Overlay places, contact the relevant local council or go to Planning Schemes Online <http://planningschemes.dpcd.vic.gov.au/>