

---

# GRASDEN HALL



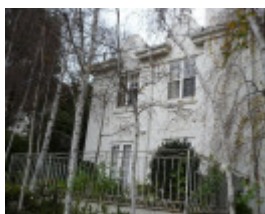
Grasden Hall Flats



Grasden Hall Flats



Grasden Hall Flats



Grasden Hall Flats



P1040988.jpeg

---

## Location

28 WASHINGTON STREET, TOORAK VIC 3142 - Property No 42768

## Municipality

STONNINGTON CITY

## Level of significance

Included in Heritage Overlay

## Heritage Overlay Numbers

HO454

## Heritage Listing

Stonnington City

---

## Statement of Significance

Last updated on -

### **What is significant?**

Grasden Hall, 28 Washington Street, Toorak designed by Arthur W. Plaisted and constructed in 1940 is significant. The significant attributes are the eclectic inter-war style form, materials and detailing of the flats as designed by Plaisted.

Later alterations and additions are not significant.

### **How is it significant?**

Grasden Hall is of local architectural significance to the City of Stonnington.

### **Why is it significant?**

Architecturally, Grasden Hall is a good example of Arthur Plaisted's late inter-war flats, in which he successfully integrates historical details suggesting the French Renaissance, such as towers and floral panels, with very modern features such as a bank of garages within the building, to create a building that still feels fresh and up-to-date. (Criteria D, E & H)

Heritage Study/Consultant	Stonnington - Residential Flats in Stonnington - Heritage Citations Project, Context P/L, 2013;
Construction dates	1941,
Architect/Designer	Plaisted, Arthur W.,
Other Names	Luxury Flats,
Hermes Number	165908
Property Number	

---

## **Physical Description 1**

Grasden Hall flats, 28 Washington Street, Toorak, is an H-shaped, two-and-a-half-storey building at the corner of Washington Street and Wallace Avenue. It is set behind a medium-sized garden to Washington Street with a mature exotic tree, with a minimal setback to Wallace Avenue.

The walls have a slightly textured render surface, and the hip roof is clad with slate. The residential ground floor is highset, allowing the incorporation of garages in the lower ground floor on the Wallace Avenue side.

The building's style is somewhat indistinct, but details such as two pyramidal rooflets suggesting towers, slightly jettied bays resting on corbels, and miniature Dutch gabled parapets, combined with delicate classical floral elements in cast-concrete panels below windows, and above the front door, suggest the French Renaissance.

The building is entered through curved wing walls facing Washington Street, and the front door is set back into the gap created by the H-plan.

Windows are mainly paired four-over-four sashes, with corner windows in the 'tower' located next to the entrance.

Alterations include the replacement of sash windows with French doors on the Washington Street elevation, installation of a glazed hood to the front door, and the creation of a link between a freestanding garage at the rear of the site with the main building.

*This place/object may be included in the Victorian Heritage Register pursuant to the Heritage Act 2017. Check the Victorian Heritage Database, selecting 'Heritage Victoria' as the place source.*

*For further details about Heritage Overlay places, contact the relevant local council or go to Planning Schemes Online <http://planningschemes.dpcd.vic.gov.au/>*