

---

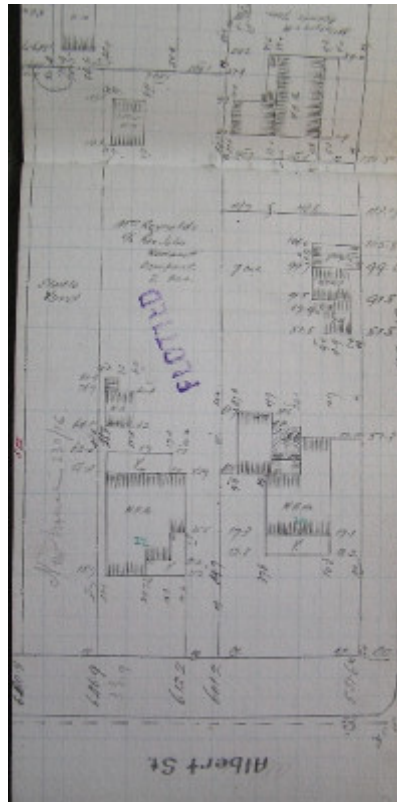
## Residence



20 Albert Street, Geelong West



20 ALbert Street - 1986 Study



GWST Fieldbook, no. 133, p.8, c.1912 (right property).

---

### Location

20 Albert Street, GEELONG WEST VIC 3218 - Property No 205868

### Municipality

GREATER GEELONG CITY

## Level of significance

Incl in HO area indiv sig

## Heritage Overlay Numbers

HO611

HO1960

## Heritage Listing

Greater Geelong City

---

## Statement of Significance

Last updated on -

LOCAL SIGNIFICANCE - INCLUDED IN HERITAGE PRECINCT

STATEMENT OF SIGNIFICANCE

This small structure appears to be a typical two-roomed dwelling in Geelong West, from the early 1850's. It is a rare survivor, with a good degree of integrity. It is of local significance.

**POLICY/RECOMMENDATIONS:** GRPS

### REFERENCES:

Taylor's 1854 map of Little Scotland, Ashby and portion of Kildare.

Villamanta Ward Rate Book, 1854.

Villamanta Ward Assessment Book, 1854-5.

Villamanta Ward Valuation Book, 1855-6

Sands and McDougall Directories, 1912, 1920, 1928.

Heritage Study/Consultant	Greater Geelong - City of Geelong West Urban Conservation Study, Huddle, Aitken and Honman, 1986; Greater Geelong - Ashby Heritage Review, D Rowe and W Jacobs, 2010;
Heritage Act Categories	Registered place,
Other Names	Rear & Front of Dwelling,
Hermes Number	16674
Property Number	

---

## Physical Description 1

The structure is shown on the left of the accompanying photograph. It is a small gabled roofed building constructed of timber. The walls are clad in weatherboards and the roof is corrugated iron. The south elevation appears to have an original window frame and an unusual barge board which may date from the early eighteen fifties.

*This place/object may be included in the Victorian Heritage Register pursuant to the Heritage Act 2017. Check the Victorian Heritage Database, selecting 'Heritage Victoria' as the place source.*

*For further details about Heritage Overlay places, contact the relevant local council or go to Planning Schemes Online <http://planningschemes.dpcd.vic.gov.au/>*