

BRUNSWICK FIRE STATION AND FLATS



BRUNSWICK FIRE STATION AND FLATS SOHE 2008



BRUNSWICK FIRE STATION AND FLATS SOHE 2008



1 brunswick fire station & flats blyth street brunswick side elevation of firestation

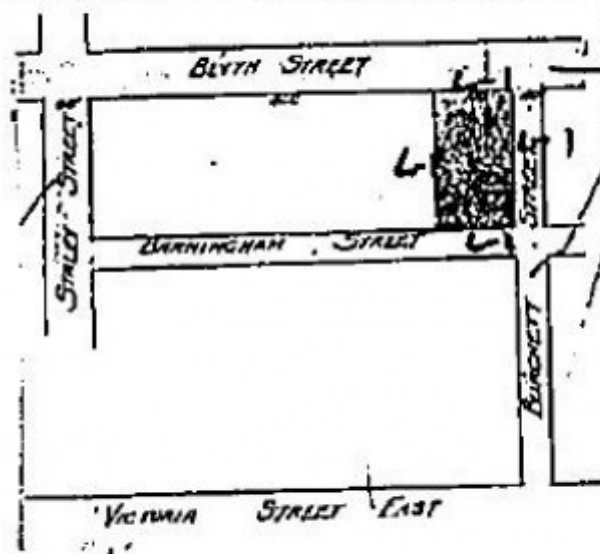


brunswick fire station & flats blyth street brunswick front elevation of fire station



brunswick fire station & flats blyth street brunswick view of flats

EXTENT OF DESIGNATION



Plan 604977S

h00916 plan h0916

Location

24 BLYTH STREET BRUNSWICK, Moreland City

Municipality

MORELAND CITY

Level of significance

Registered

Victorian Heritage Register (VHR) Number

H0916

Heritage Overlay Numbers

HO26

VHR Registration

May 6, 1992

Heritage Listing

Statement of Significance

Last updated on - January 27, 2000

The Brunswick fire station and flats, designed by the architectural firm of Seabrook and Fildes in 1936, the builders being 7 Mann PLI and opened in 1937, are historically and architecturally significant because: The Brunswick fire station and flats is the first fire station complex in Victoria which indicates the change in the architectural policy of the Metropolitan Fire Brigade from conservative period styling to the latest modern architecture from Europe. The Brunswick fire station and flats are a rare and perhaps the only example of a separate fire station building and flat block complex which forms its own residential precinct, indicative of modern urban planning then occurring in Europe in the 1930s. The significance of the complex is enhanced by its continuing use as an operating fire station.

The Brunswick fire station and flats are one of the most significant works of the noted architects Seabrook and Fildes, who are acknowledged as bringing European modern architecture to Victoria in 1934 in the form of Mac Robertson Girls High School.

The buildings are a fine example of the vocabulary of modern architecture derived from the work of Dutch architect Willem Dudok whose expertise with brick construction brought a new meaning to the concept of modern architecture and its exportability to countries such as Australia and Great Britain.

Construction dates	1936,
Architect/Designer	Seabrook & Fildes,
Heritage Act Categories	Registered place,
Hermes Number	168
Property Number	

History

Associated People:

Extent of Registration

AMENDMENT OF REGISTER OF HISTORIC BUILDINGS

Historic Building No. 916.

Brunswick Fire Station and Flats, 24 Blyth Street, Brunswick

To the extent of:

1. The whole of the buildings known as the Brunswick Fire Station and Flats, marked B-1 on Plan 604977S endorsed by the Chairperson, Historic Buildings Council and held by the Director, Historic Buildings Council.
2. All the land marked L-1 on Plan 604977S endorsed by the Chairperson, Historic Buildings Council and held by the Director, Historic Buildings Council, being the land comprised in the Certificate of Title Volume 4696 Folio 939129.

[Victoria Government Gazette No. G15 17 6 May 1992 p.1082]

This place/object may be included in the Victorian Heritage Register pursuant to the Heritage Act 2017. Check the Victorian Heritage Database, selecting 'Heritage Victoria' as the place source.

For further details about Heritage Overlay places, contact the relevant local council or go to Planning Schemes Online <http://planningschemes.dpcd.vic.gov.au/>