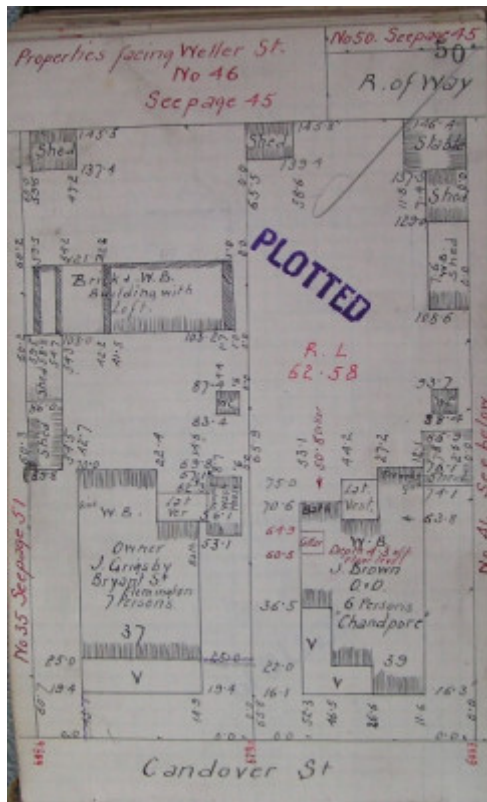


Residence



37 Candover Street, Geelong West



GWST Fieldbook, no. 33, p.51, c.1912 (left property).

Location

37 Candover Street, GEELONG WEST VIC 3218 - Property No 206590

Municipality

GREATER GEELONG CITY

Level of significance

Incl in HO area indiv sig

Heritage Overlay Numbers

HO648

HO1962

Heritage Listing

Greater Geelong City

Statement of Significance

Last updated on -

LOCAL SIGNIFICANCE - INCLUDED IN HERITAGE PRECINCT

STATEMENT OF SIGNIFICANCE

37 Candover Street has been the property of two successive families from 1889 to 1986, the Grigsby's and the Julien's respectively. It is a typical house from the Victorian period and has an excellent degree of integrity. The property still has the two storey structure which was built about the same time as the house as a stable or cordial manufactory or both. It is of local significance

POLICY/RECOMMENDATIONS

GRPS

More appropriate paint colours would greatly enhance the character of this building as would more appropriate gates and fence.

REFERENCES

Borough of Geelong West Rate Books, 1887-8, 1889-90, 1892-3, 1908-9, 1919-20

Heritage Study/Consultant	Greater Geelong - City of Geelong West Urban Conservation Study, Huddle, Aitken and Honman, 1986; Greater Geelong - Ashby Heritage Review, D Rowe and W Jacobs, 2010;
Heritage Act Categories	Registered place,
Hermes Number	16890
Property Number	

Physical Description 1

DESCRIPTION

The house is a typical single storey weatherboard building in the Victorian Style. It has a hipped roof and convex verandah, clad in corrugated iron. The front elevation is symmetrical with a central door and a double-hung window on either side. Decorative elements include the stuccoed chimney, the eave brackets with mouldings between them, and the cast iron lace valance on the verandah. The two storey building at the rear has not been inspected by the consultants

This place/object may be included in the Victorian Heritage Register pursuant to the Heritage Act 2017. Check the Victorian Heritage Database, selecting 'Heritage Victoria' as the place source.

For further details about Heritage Overlay places, contact the relevant local council or go to Planning Schemes Online <http://planningschemes.dpcd.vic.gov.au/>