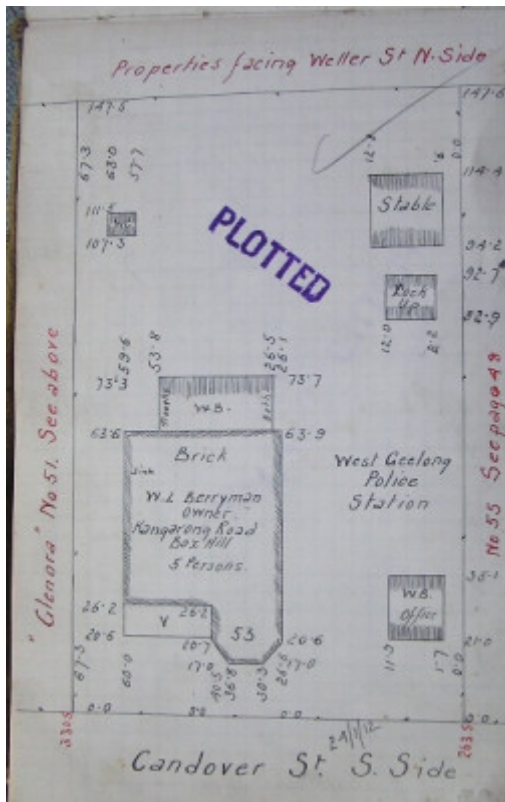


# Residence



16901 53 Candover Street  
Geelong West



GWST Fieldbook, no. 33, p.49, 21 Jan 1912.

## Location

53 Candover Street, GEELONG WEST VIC 3218 - Property No 206605

## Municipality

GREATER GEELONG CITY

## Level of significance

Incl in HO area indiv sig

## Heritage Overlay Numbers

HO649

HO1962

## Heritage Listing

Greater Geelong City

---

## Statement of Significance

Last updated on -

LOCAL SIGNIFICANCE - INCLUDED IN HERITAGE PRECINCT

### STATEMENT OF SIGNIFICANCE

53 Candover is a typical Late Victorian brick residence with an excellent degree of integrity, although there are only a few of these in the municipality of Geelong West. It was built in 1891-2 for William Lee Berryman and was used as the Geelong West Police Station for some time in the twentieth century. It is of local significance.

### POLICYRECOMMENDATIONS

#### GRPS

Reinstatement of an appropriate fence would greatly enhance the character of this property.

### REFERENCES

Borough of Geelong West Rate Books, 1890-1, 1891-2, 1892-3, 1919-20.

Sands and McDougall Directory, 1920.

Heritage Study/Consultant	Greater Geelong - City of Geelong West Urban Conservation Study, Huddle, Aitken and Honman, 1986; Greater Geelong - Ashby Heritage Review, D Rowe and W Jacobs, 2010;
Heritage Act Categories	Registered place,
Other Names	Former Geelong West Police Station,
Hermes Number	16901
Property Number	

---

## Physical Description 1

## DESCRIPTION

53 Candover Street was built in 1891-2. It is a single storey brick building set on a bluestone plinth, and with a hipped roof clad with slates. It is typical of the late Victorian style which incorporated design features such as an asymmetrical front elevation, polychrome brickwork, projecting room with a bay window, a large window with narrow side lights and elaborate cast iron lace and columns. It has long double-hung windows with buestone sills.

*This place/object may be included in the Victorian Heritage Register pursuant to the Heritage Act 2017. Check the Victorian Heritage Database, selecting 'Heritage Victoria' as the place source.*

*For further details about Heritage Overlay places, contact the relevant local council or go to Planning Schemes Online <http://planningschemes.dpcd.vic.gov.au/>*