

# ALEXANDRA COURT HOUSE AND FORMER SHIRE OFFICES



ALEXANDRA COURT HOUSE AND FORMER SHIRE OFFICES SOHE 2008



alexandra court house & shire hall front view feb1985



alexandra court house & shire hall rear view feb1985



alexandra court house & shire hall street view feb1985



Alexandra court house



Before Photographs - Reference F3922 2014



Before Photographs - Reference F3922 2014



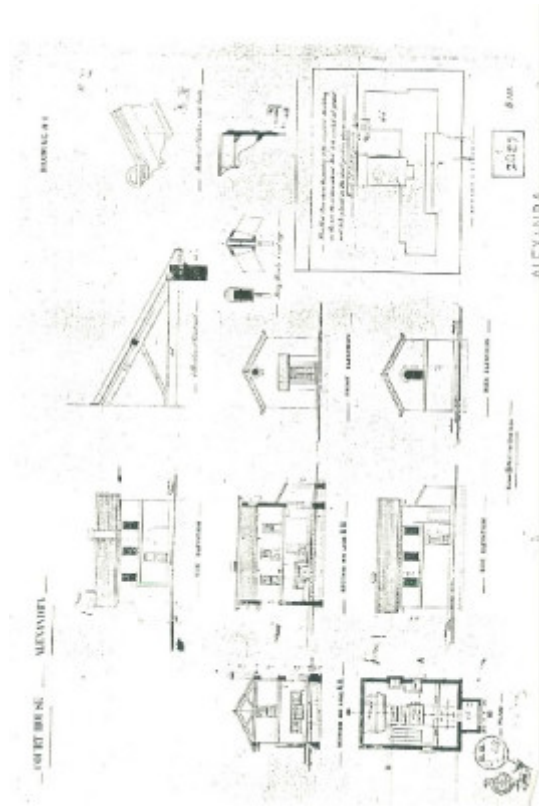
After Photographs - Reference F3922 2016



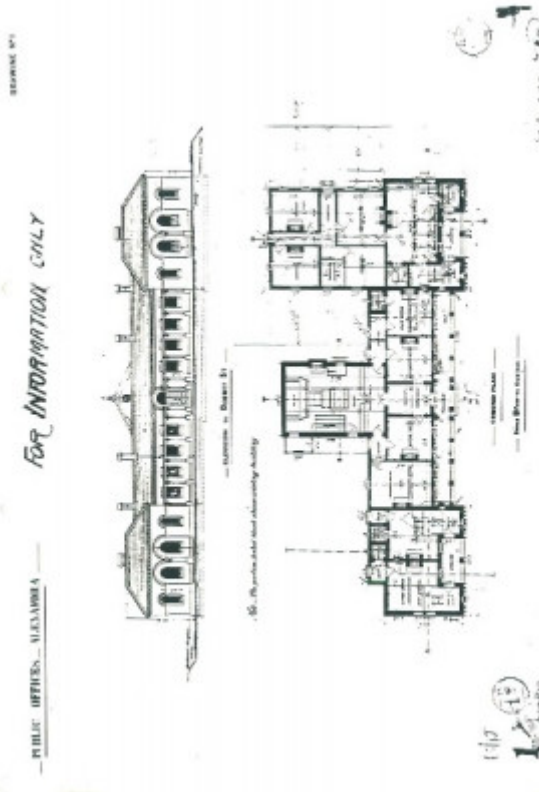
After Photographs - Reference F3922 2016



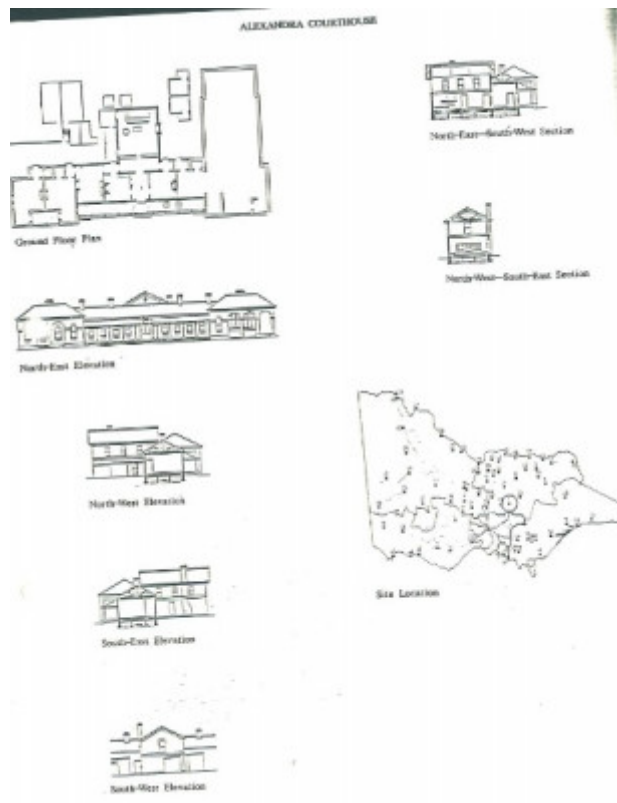
After Photographs - Reference F3922 2016



Alexandra court house



Alexandra court house



Alexandra court house plans

---

## Location

38A DOWNEY STREET ALEXANDRA, MURRINDINDI SHIRE

## Municipality

MURRINDINDI SHIRE

## Level of significance

Registered

## Victorian Heritage Register (VHR) Number

H1654

## Heritage Overlay Numbers

HO12

## VHR Registration

August 20, 1982

## Amendment to Registration

May 23, 1998

## Heritage Listing

Victorian Heritage Register

---

### Statement of Significance

Last updated on - January 25, 2000

The public offices at Alexandra are architecturally significant as an uncommon example of public works architecture, which incorporates a post office, shire offices and courthouse into a single, substantial compound. The complex, built in 1877, is unusual because the building has a symmetrical facade of hip-roofed wings united by wide, barrel vaulted central entry, typical elements of the Victorian free classical style, and forms a strong element in the streetscape.

[Source: Register of the National Estate.]

Construction dates	1877,
Architect/Designer	Ellerker, William H,
Heritage Act Categories	Registered place,
Hermes Number	17
Property Number	

---

### Extent of Registration

Amendment of Register of Government Buildings  
Alberton Shire

Court House and former Shire Hall, Corner Webster and Downey Streets, Alexandra.  
[*Victoria Government Gazette* No. G39 12 October 1988 p3086]

Transferred to the Victorian Heritage Register 23 May 1998 (2 years after the proclamation of the Heritage Act 1995 pursuant to the transitional provisions of the Act)

*This place/object may be included in the Victorian Heritage Register pursuant to the Heritage Act 2017. Check the Victorian Heritage Database, selecting 'Heritage Victoria' as the place source.*

*For further details about Heritage Overlay places, contact the relevant local council or go to Planning Schemes Online <http://planningschemes.dpcd.vic.gov.au/>*