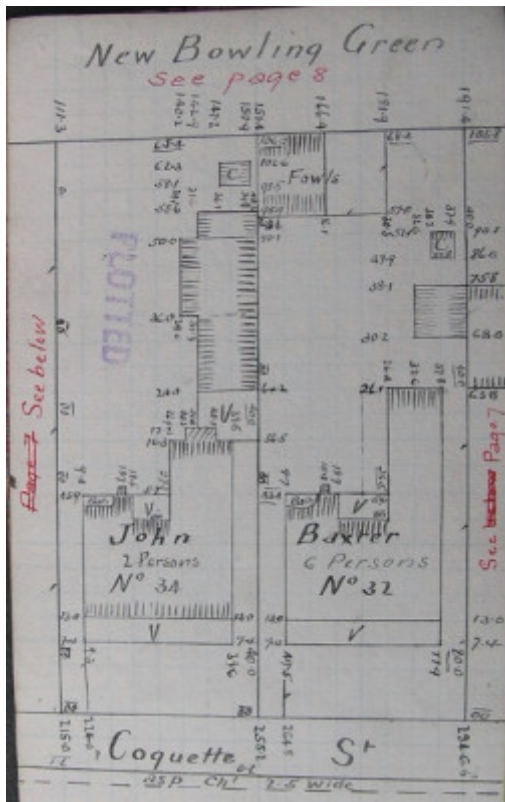


Residence



32 Coquette Street, Geelong West

Source; Aitken, Honman & Huddle, "City of Geelong West Urban Conservation Study, 1986"



GWST Fieldbook, no. 163, p.6, p 6, c1913 (right property)

Location

32 Coquette Street, GEELONG WEST VIC 3218 - Property No 207270

Municipality

GREATER GEELONG CITY

Level of significance

Incl in HO area indiv sig

Heritage Overlay Numbers

HO656

HO1961

Heritage Listing

Greater Geelong City

Statement of Significance

Last updated on -

LOCAL SIGNIFICANCE - INCLUDED IN HERITAGE PRECINCT

STATEMENT OF SIGNIFICANCE

An unusually long row of speculative housing from the 1890's period. They are typical of the Victorian style timber houses built in Geelong West but are very restrained for the Late Victorian period to which they belong and perhaps reflect the modest incomes of the early occupants. They are of local significance.

POLICY RECOMMENDATIONS

G.R.P.S.

Reinstatement of appropriate fences, gates, verandah columns and decoration, and appropriate paint colours would greatly enhance the character of the buildings and streetscape

REFERENCES

Geelong West Building Register, 1921-3

Borough of Geelong west rate Books, 1893, 1896-7, 1897-8, 1898-9, 1900

Heritage Study/Consultant	Greater Geelong - City of Geelong West Urban Conservation Study, Huddle, Aitken and Honman, 1986; Greater Geelong - Ashby Heritage Review, D Rowe and W Jacobs, 2010;
Heritage Act Categories	Registered place,
Other Names	Also see 30, 34, 36 & 38 Coquette Street, geelong West (Row of five houses),
Hermes Number	17046
Property Number	

Physical Description 1

DESCRIPTION

The house's are single storey weatherboard with hipped roofs clad in corrugated iron. The front elevation is symmetrical with a central door and double-hung window either side. A hipped and slightly convex verandah is attached to each of the buildings. Decorative elements include the stringcourse on the brick chimneys, eaves brackets and the cast iron verandah valance and brackets. They are typical for the Victorian era and are somewhat to conservative for the Late Victorian period.

This place/object may be included in the Victorian Heritage Register pursuant to the Heritage Act 2017. Check the Victorian Heritage Database, selecting 'Heritage Victoria' as the place source.

For further details about Heritage Overlay places, contact the relevant local council or go to Planning Schemes Online <http://planningschemes.dpcd.vic.gov.au/>