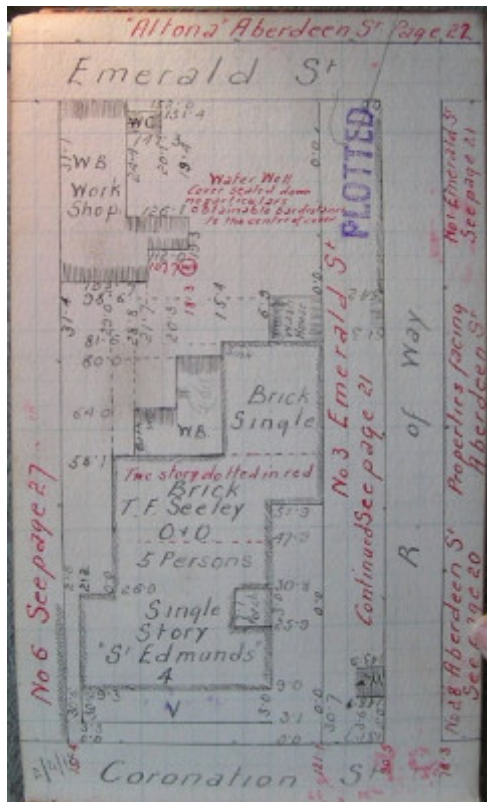


## Residence & Office



4 Coronation Street, Geelong West

Source: Aitken, Honman & Huddle, 'City of Geelong West Urban Conservation Study', 1986.



GWST Fieldbook, no. 123, p.26, 2 April 1912

### Location

4 Coronation Street, GEELONG WEST VIC 3218 - Property No 207285

### Municipality

GREATER GEELONG CITY

## Level of significance

Incl in HO area indiv sig

## Heritage Overlay Numbers

HO660

HO1959

## Heritage Listing

Greater Geelong City

---

## Statement of Significance

Last updated on -

LOCAL SIGNIFICANCE - INCLUDED IN HERITAGE PRECINCT

STATEMENT OF SIGNIFICANCE

4 Coronation Street was home to early Geelong architect Thomas Seeley. It is a typical 1880's home and it has excellent integrity. It is of local significance.

POLICY RECOMMENDATIONS

G.R.P.S.

Reinstatement of appropriate fence would greatly enhance the character of the building.

REFERENCES

R Aitken - "Edwardian Geelong: an architectural introduction", Elective 3,

Architecture Division, Deaking University, 1979, pp 14, 20-22

Borough of Geelong West Rate Book, 1916-17.

Sands and McDougall Directories, 1920, 1928.

Heritage Study/Consultant	Greater Geelong - City of Geelong West Urban Conservation Study, Huddle, Aitken and Honman, 1986;
Heritage Act Categories	Registered place,
Hermes Number	17056
Property Number	

---

## Physical Description 1

### DESCRIPTION

This is a single storey brick building with a two storey timber section at the rear. It abuts the terrace at 6 Coronation Street and is a symmetrical. The roof is clad in corrugated iron. The dominant decorative element is the use of polychrome brickwork around the windows, on the chimneys and wall angles, and between the eaves brackets. Complementing this is the verandah valance and columns in fine cast iron lace.

*This place/object may be included in the Victorian Heritage Register pursuant to the Heritage Act 2017. Check the Victorian Heritage Database, selecting 'Heritage Victoria' as the place source.*

*For further details about Heritage Overlay places, contact the relevant local council or go to Planning Schemes Online <http://planningschemes.dpcd.vic.gov.au/>*