

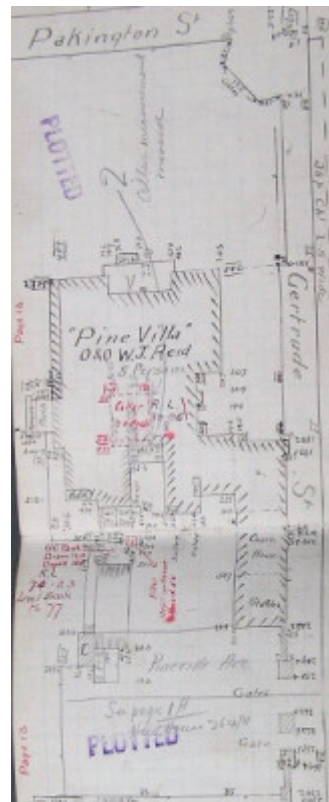
"Pineville" Private Nursing Home



2 Gertrude Street, Geelong West



Source; Aitken, Honman & Huddle, "City of Geelong West Urban Conservation Study, 1986"



GWST Fieldbook, no. 163, p.12, c 1912

Location

2 Gertrude Street, GEELONG WEST VIC 3218 - Property No 208031

Municipality

Level of significance

Incl in HO area indiv sig

Heritage Overlay Numbers

HO209

HO1961

Heritage Listing

Greater Geelong City

Statement of Significance

Last updated on -

REGIONAL SIGNIFICANCE - INCLUDED IN HERITAGE PRECINCT

STATEMENT OF SIGNIFICANCE

'Pineville' survives as one of Geelong's earliest buildings even though extensive additions have obscured much of the original design. It was built about 1850-1 for William Timms and the design is attributed to the architect Charles Lang. It is of regional significance.

Reference

A. Willingham, ' Historic Places Documentation Sheet' No 209, GRC, (n.d).

Heritage Study/Consultant	Greater Geelong - City of Geelong West Urban Conservation Study, Huddle, Aitken and Honman, 1986; Greater Geelong - Ashby Heritage Review, D Rowe and W Jacobs, 2010;
Heritage Act Categories	Registered place,
Hermes Number	17151
Property Number	

Physical Description 1

The design of 'Pineville' is attributed to the architect Charles Laing. It is a two storey stone mansion which features a fine doric portico and classically derived ornamentation. Extensive additions have been constructed which partially obscure the original building.

This place/object may be included in the Victorian Heritage Register pursuant to the Heritage Act 2017. Check the Victorian Heritage Database, selecting 'Heritage Victoria' as the place source.

For further details about Heritage Overlay places, contact the relevant local council or go to Planning Schemes Online <http://planningschemes.dpcd.vic.gov.au/>