

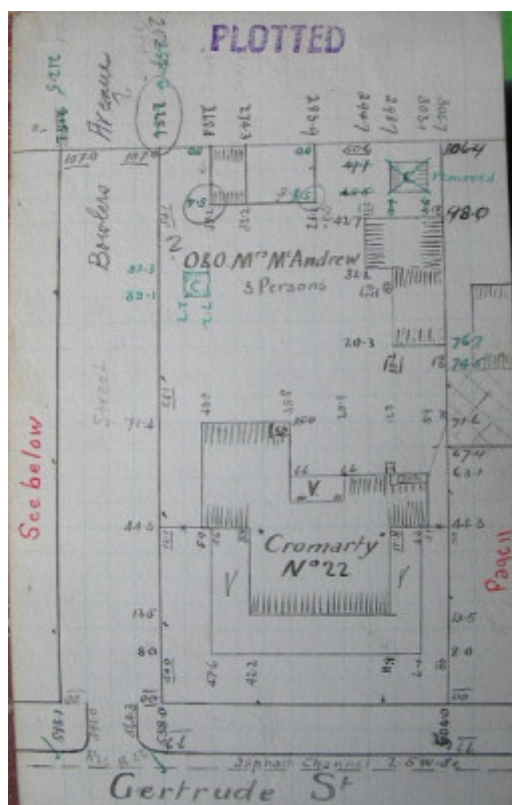
## "Cromarty"- Nursing Home



22 Gertrude Street, Geelong West



Source; Aitken, Honman & Huddle, "City of Geelong West Urban Conservation Study, 1986"



GWST Fieldbook, no. 163, p.10, c.1912.

### Location

22 Gertrude Street, GEELONG WEST VIC 3218 - Property No 208042

### Municipality

## Level of significance

Incl in HO area contributory

## Heritage Overlay Numbers

HO1961

## Heritage Listing

Greater Geelong City

---

## Statement of Significance

Last updated on -

CONTRIBUTORY SIGNIFICANCE

Heritage Study/Consultant	Greater Geelong - City of Geelong West Urban Conservation Study, Huddle, Aitken and Honman, 1986; Greater Geelong - Ashby Heritage Review, D Rowe and W Jacobs, 2010;
Heritage Act Categories	Registered place,
Hermes Number	17158
Property Number	

---

*This place/object may be included in the Victorian Heritage Register pursuant to the Heritage Act 2017. Check the Victorian Heritage Database, selecting 'Heritage Victoria' as the place source.*

*For further details about Heritage Overlay places, contact the relevant local council or go to Planning Schemes Online <http://planningschemes.dpcd.vic.gov.au/>*