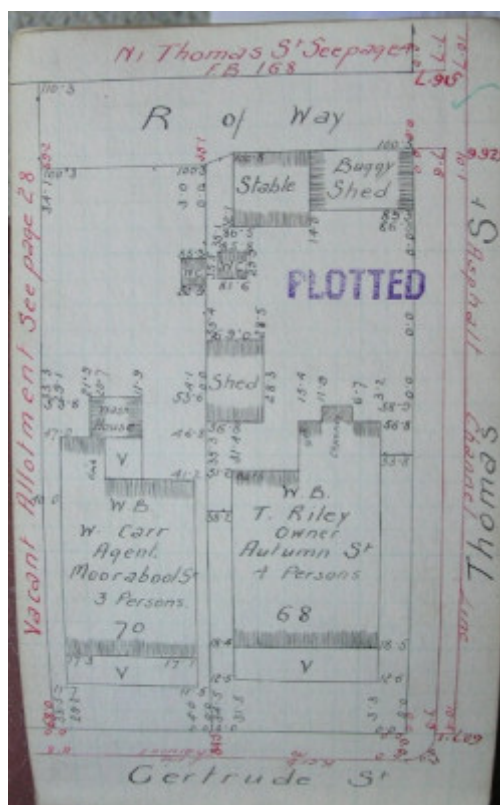


Residence



Source; Aitken, Honman & Huddle, "City of Geelong West Urban Conservation Study, 1986"



GWST Fieldbook, no. 163, p.27, c.1911 (right property).

Location

68 Gertrude Street, GEELONG WEST VIC 3218 - Property No 208085

Municipality

GREATER GEELONG CITY

Level of significance

Incl in HO area contributory

Heritage Overlay Numbers

HO1961

Heritage Listing

Greater Geelong City

Statement of Significance

Last updated on -

CONTRIBUTORY SIGNIFICANCE

Heritage Study/Consultant Greater Geelong - Ashby Heritage Review, D Rowe and W Jacobs, 2010;

Heritage Act Categories Registered place,

Hermes Number 17177

Property Number

This place/object may be included in the Victorian Heritage Register pursuant to the Heritage Act 2017. Check the Victorian Heritage Database, selecting 'Heritage Victoria' as the place source.

For further details about Heritage Overlay places, contact the relevant local council or go to Planning Schemes Online <http://planningschemes.dpcd.vic.gov.au/>