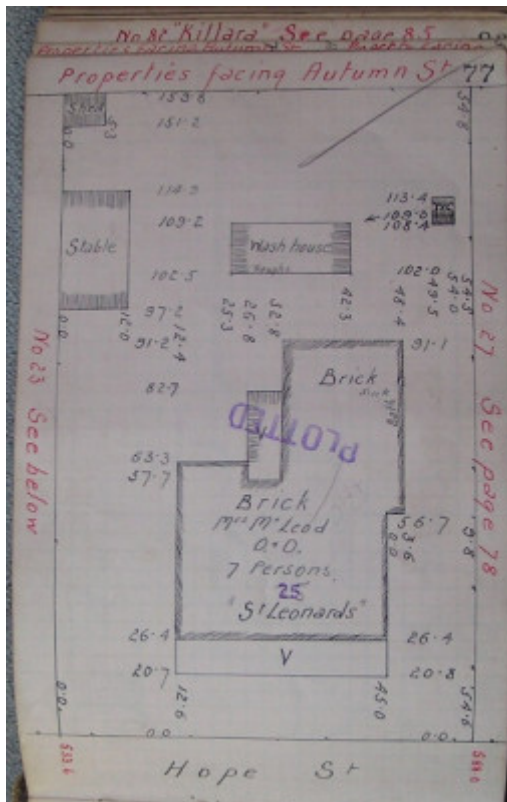


"St Leonards"



25 Hope Street Geelong West



GWST Fieldbook, no.33, p.77, c.1912.

Location

25 Hope Street, GEELONG WEST VIC 3218 - Property No 208584

Municipality

GREATER GEELONG CITY

Level of significance

Incl in HO area indiv sig

Heritage Overlay Numbers

HO702

HO1962

Heritage Listing

Greater Geelong City

Statement of Significance

Last updated on -

LOCAL SIGNIFICANCE - INCLUDED IN HERITAGE PRECINCT

25 Hope Street was built circa 1889 for J.M.Dick. It is a Late Victorian house with a conservative elements for that period. It has a good degree of integrity. It is of local significance.

References

Borough of Geelong West Rate book. 1889-90.

Sands & McDougall Directory, 1912.

Buchan Laird and Buchan, Architects. Drawings and Specifications. Alterations for Mrs. Williams shows existing conditions drawing and assessment of the house. Packet W19.

Heritage Study/Consultant	Greater Geelong - City of Geelong West Urban Conservation Study, Huddle, Aitken and Honman, 1986; Greater Geelong - Ashby Heritage Review, D Rowe and W Jacobs, 2010;
Heritage Act Categories	Registered place,
Hermes Number	17306
Property Number	

Physical Description 1

It is a single storey brick building with a verandah and hipped roof clad in corrugated iron. The front elevation is symmetrical with a central front door and a double-hung window on either side and stuccoed chimney's protruding from the rear of the roof. Decorative elements include the tiled verandah floor, the cast iron lace on the balustrade, valance and brackets of the verandah, and the polychrom brickwork. The latter is an element more common on buildings built between 1860 and 1880.

This place/object may be included in the Victorian Heritage Register pursuant to the Heritage Act 2017. Check the Victorian Heritage Database, selecting 'Heritage Victoria' as the place source.

For further details about Heritage Overlay places, contact the relevant local council or go to Planning Schemes Online <http://planningschemes.dpcd.vic.gov.au/>