

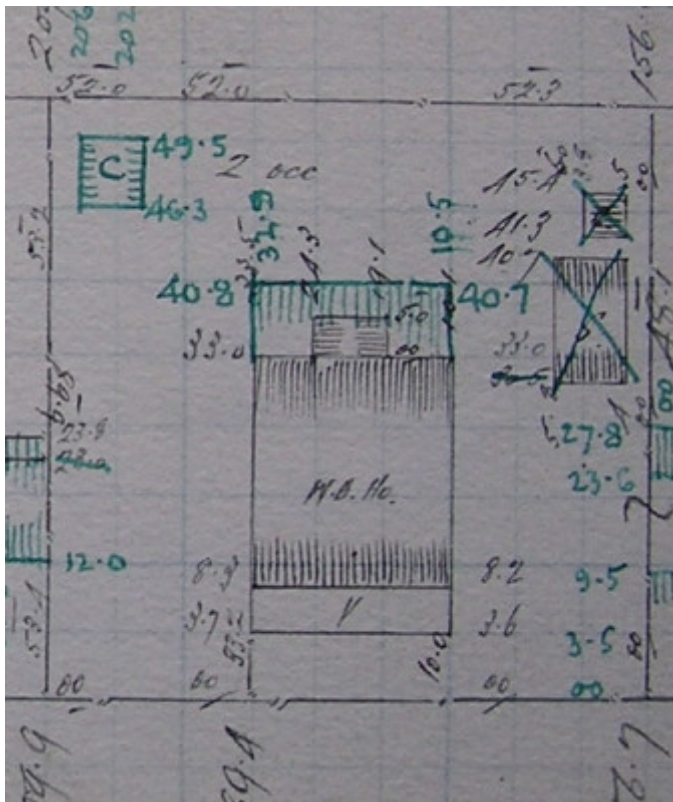
Residence



2 Lisdale Street, Geelong West



Source, Honman & Huddle, 'City of Geelong West Urban Conservation Study', 1986



GWST Fieldbook, no. 133, p.11, c.1912.

Location

2 Lisdale Street, GEELONG WEST VIC 3218 - Property No 209369

Municipality

Level of significance

Incl in HO area indiv sig

Heritage Overlay Numbers

HO726

HO1960

Heritage Listing

Greater Geelong City

Statement of Significance

Last updated on -

LOCAL SIGNIFICANCE - INCLUDED IN HERITAGE PRECINCT

STATEMENT OF SIGNIFICANCE

2 Lisdale Street is a typical 1850s weatherboard house which has interesting details. It is of local significance.

Heritage Study/Consultant	Greater Geelong - City of Geelong West Urban Conservation Study, Huddle, Aitken and Honman, 1986; Greater Geelong - Ashby Heritage Review, D Rowe and W Jacobs, 2010;
Heritage Act Categories	Registered place,
Hermes Number	17500
Property Number	

Physical Description 1

The single storey timber building is clad with weatherboards and the hipped and skillion roof and verandah are clad in corrugated iron. The front elevation is symmetrical with a central front door and a double-hung window on either side. The boards on the front wall are narrow and laid flush with each other. The verandah is convex and it is supported by four posts which have restrained decoration. There is a very small window on the south elevation.

This place/object may be included in the Victorian Heritage Register pursuant to the Heritage Act 2017. Check the Victorian Heritage Database, selecting 'Heritage Victoria' as the place source.

For further details about Heritage Overlay places, contact the relevant local council or go to Planning Schemes Online <http://planningschemes.dpcd.vic.gov.au/>