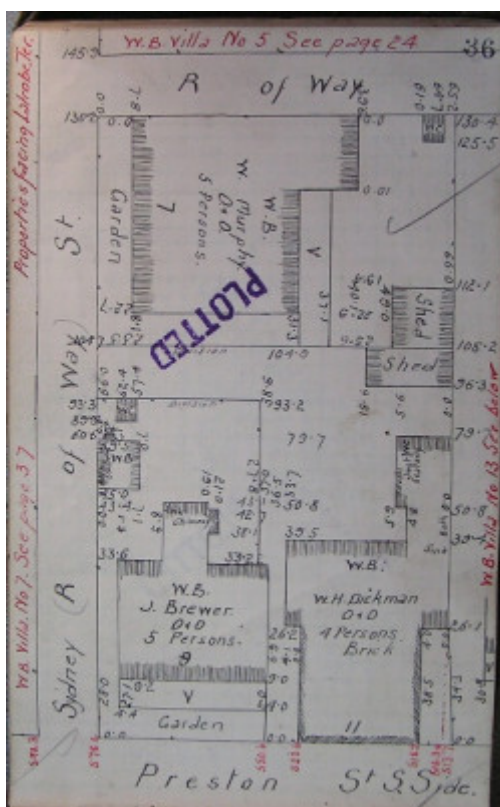


Residence



11 Preston Street, Geelong West



GWST Fieldbook, no. 33, p.36, c.1912 (lower right property).

Location

11 Preston Street, GEELONG WEST VIC 3218 - Property No 210208

Municipality

GREATER GEELONG CITY

Level of significance

Incl in HO area indiv sig

Heritage Overlay Numbers

HO760

HO1962

Heritage Listing

Greater Geelong City

Statement of Significance

Last updated on -

STATE SIGNIFICANCE - INCLUDED IN HERITAGE PRECINCT

STATEMENT OF SIGNIFICANCE

11 Preston Street is an unusual design for a shop and dwelling built in 1855-6. It is a reminder of the important function of the commercial activity of Preston and other nearby streets before Pakington became the commercial centre of Geelong West. It is of Regional significance.

References

Villamanta Ward Rate and Assessment Books 1854-1858

Thomson Ward Rate Book 1864-5

Borough of Geelong West Rate books 1876-1901

Heritage Study/Consultant	Greater Geelong - City of Geelong West Urban Conservation Study, Huddle, Aitken and Honman, 1986; Greater Geelong - Ashby Heritage Review, D Rowe and W Jacobs, 2010;
Hermes Number	17700
Property Number	

Physical Description 1

Description

The design of this building indicates that it was built in stages. The front room appears to be the original brick shop as it is set on the street boundary. It is single storey and built of brick with a hipped roof covered in corrugated iron. The windows and door have been altered. Immediately behind and attached to this room is another single storey brick selection which has a higher ceiling level than the former shop. It too has a hipped roof covered in corrugated iron. A third selection is attached to the rear of the brick buildings and is constructed of

timber. It is unclear from the Rate Books when each of the stages was constructed.

This place/object may be included in the Victorian Heritage Register pursuant to the Heritage Act 2017. Check the Victorian Heritage Database, selecting 'Heritage Victoria' as the place source.

For further details about Heritage Overlay places, contact the relevant local council or go to Planning Schemes Online <http://planningschemes.dpcd.vic.gov.au/>