

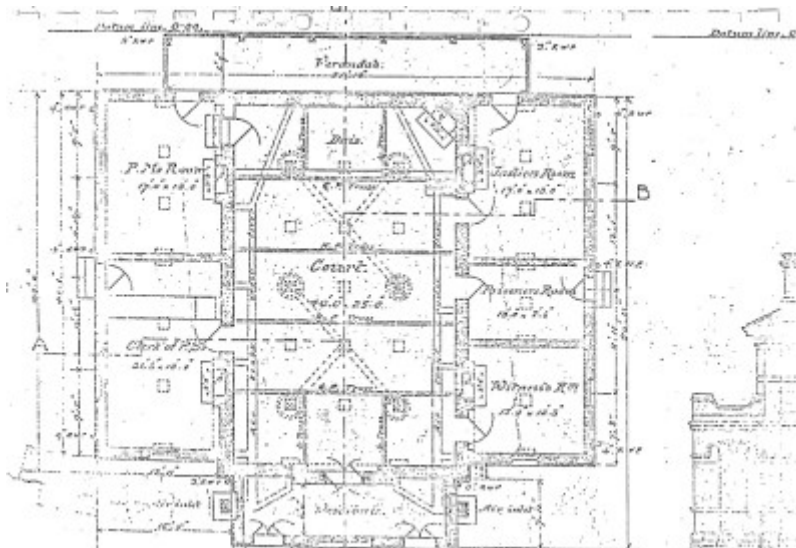
## Court House (Former)



Court House Camp St -  
Ballarat Heritage Review,  
1998



former Court House02 -  
Ballarat Conservation Study,  
1978.jpg



former Court House - Ballarat Conservation Study, 1978

### Location

5 CAMP STREET, BALLARAT CENTRAL - PROPERTY NUMBER 2004398, BALLARAT CITY

### Municipality

BALLARAT CITY

### Level of significance

Incl in HO area indiv sig

### Heritage Overlay Numbers

## Heritage Listing

Ballarat City

---

### Statement of Significance

Last updated on - March 3, 2024

**What is significant?**

**How is it significant?**

**Why is it significant?**

*Ballarat Conservation Study, 1978*

Part of Recommended Area A1.1.

No SoS provided in this citation. Please refer to descriptions, history, construction, loc govt, listings and images sections in this place record for further information.

*Ballarat Heritage Review, 1998*

No SoS provided in this citation. Please refer to history and images sections in this place record for further information.

Heritage Study/Consultant	Ballarat - Ballarat Heritage Precincts Study, Dr David Rowe and Wendy Jacobs, 2006; Ballarat - Ballarat Conservation Study, Jacobs Lewis Vines Architects, 1978; Ballarat - Ballarat Heritage Review, Andrew Ward, 1998;
Construction dates	1903,
Architect/Designer	Public Works Department,
Hermes Number	178145
Property Number	

---

### Physical Description 1

The court house was constructed in 1903 to a design by the Public Works Department. The original drawings survive indicating that the building is substantially intact. It follows the traditional court house formula: a double storey central section containing the court room with flanking single storey rooms (the witness', prisoner's, justice's, clerk and police magistrates rooms). The only modification to the drawing is the parapet to the projecting vestibule which ~as originally to be curved, not horizontal as exists now.

The building is simple in conception with the red brick relieved by cement detailing : a string course at impost level surmounting a cement band, a cement cornice and plain cement lintels. The building is ashlar with a suggestion of Romanesque influence in the front vestibule window - otherwise windows are simple with flattened or horizontal heads.

The building provides a contributory element to the Camp Street precinct.

While the design is not of great significance, the building is of importance in a local context and is worthy of

preservation. It is in good condition.

## **Integrity**

SUBSTANTIALLY INTACT

*This place/object may be included in the Victorian Heritage Register pursuant to the Heritage Act 2017. Check the Victorian Heritage Database, selecting 'Heritage Victoria' as the place source.*

*For further details about Heritage Overlay places, contact the relevant local council or go to Planning Schemes Online <http://planningschemes.dpcd.vic.gov.au/>*