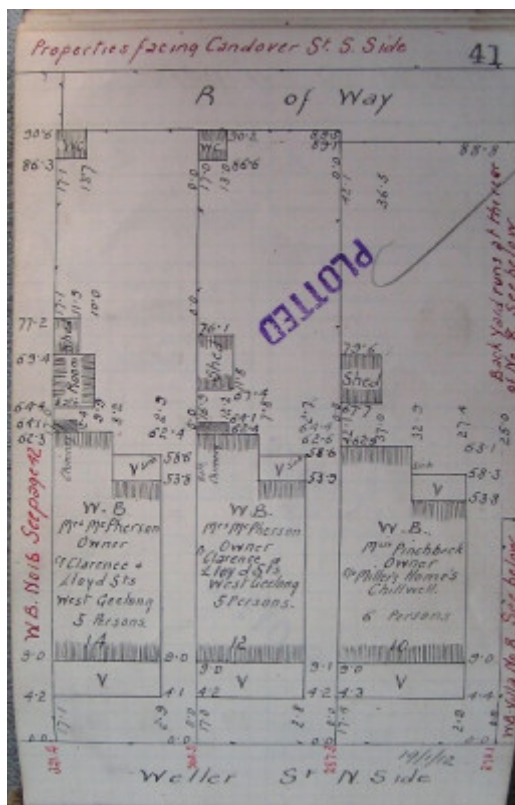


Residence



10 Weller Street, Geelong West



GWST Fieldbook, no. 33, p.41, 19 Jan 1912 (right property).

Location

10 Weller Street, GEELONG WEST VIC 3218 - Property No 211387

Municipality

GREATER GEELONG CITY

Level of significance

Incl in HO area indiv sig

Heritage Overlay Numbers

HO778

HO1962

Heritage Listing

Greater Geelong City

Statement of Significance

Last updated on -

LOCAL SIGNIFICANCE - INCLUDED IN HERITAGE PRECINCT

STATEMENT OF SIGNIFICANCE

These buildings are an unusual row of single fronted timber houses which may date from the early 1850's. They are of LOCAL significance.

Heritage Study/Consultant Greater Geelong - Ashby Heritage Review, D Rowe and W Jacobs, 2010;

Heritage Act Categories Registered place,

Hermes Number 17988

Property Number

Physical Description 1

Description

There are three timber buildings set close to the front of the sites and to each other. They all have a simple gable roof and the south gable end is the front elevation. The front door is placed to one side of the south elevation. This asymmetry is balanced by the window. Each house has a verandah. The only original decorative elements appear to be the wooden barge boards and finial at the apex of the gable end. It is interesting to note that the barge board on No. 10 is similar to the one on No. 21 Weller Street. The barge board on No. 12 was the same as No. 10 but it has been altered and the finial removed. The barge board on No. 14 has quite a different pattern and the small finial is intact. Numerous alterations have changed the original appearance of these houses. No. 10 is the most intact. Alterations to No. 10 include the front window, the concrete verandah floor, the valance decoration on the verandah and the front fence.

This place/object may be included in the Victorian Heritage Register pursuant to the Heritage Act 2017. Check the Victorian Heritage Database, selecting 'Heritage Victoria' as the place source.

For further details about Heritage Overlay places, contact the relevant local council or go to Planning Schemes Online <http://planningschemes.dpcd.vic.gov.au/>