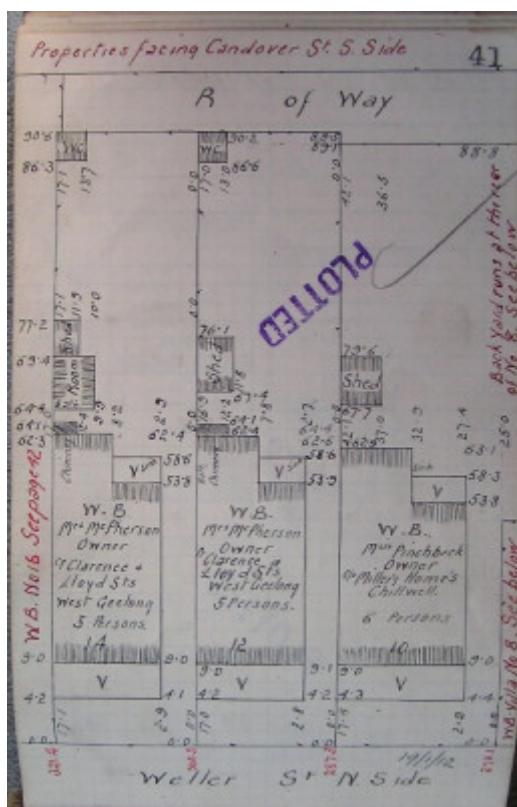


Residence



14 Weller Street, Geelong
West



GWST Fieldbook, no. 33, p.41, 19 Jan 1912 (left property).

Location

14 Weller Street, GEELONG WEST VIC 3218 - Property No 211391

Municipality

GREATER GEELONG CITY

Level of significance

Incl in HO area indiv sig

Heritage Overlay Numbers

HO780

HO1962

Heritage Listing

Greater Geelong City

Statement of Significance

Last updated on -

LOCAL SIGNIFICANCE - INCLUDED IN HERITAGE PRECINCT

STATEMENT OF SIGNIFICANCE

These buildings are an unusual row of single fronted timber houses which may date from the early 1850's. They are of local significance.

POLICY / RECOMMENDATIONS

G.R.P.S.

More appropriate window jointery would greatly enhance these buildings as would appropriate verandahs on No's 12 and 14. Reinstatement of the weatherboard cladding on No.14 would greatly improve the integrity of this group of buildings.

REFERENCES

Taylor's 1854 map of Little Soctland, Ashby and portion of Kildare.

Heritage Study/Consultant	Greater Geelong - City of Geelong West Urban Conservation Study, Huddle, Aitken and Honman, 1986; Greater Geelong - Ashby Heritage Review, D Rowe and W Jacobs, 2010;
Heritage Act Categories	Registered place,
Hermes Number	17992
Property Number	

This place/object may be included in the Victorian Heritage Register pursuant to the Heritage Act 2017. Check the Victorian Heritage Database, selecting 'Heritage Victoria' as the place source.

For further details about Heritage Overlay places, contact the relevant local council or go to Planning Schemes Online <http://planningschemes.dpcd.vic.gov.au/>