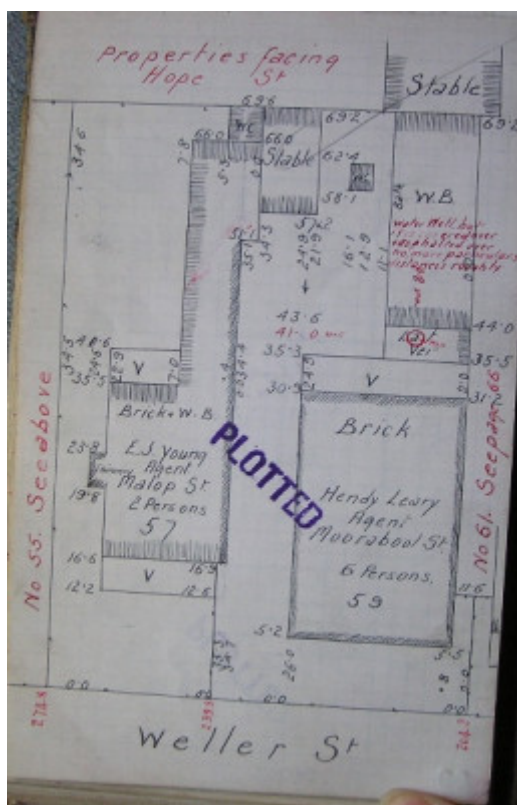


Residence



59 Weller Street, Geelong
West



GWST Fieldbook, no. 33, p.67, c.1912 (right property).

Location

59-63 Weller Street, GEELONG WEST VIC 3218 - Property No 211434

Municipality

GREATER GEELONG CITY

Level of significance

Incl in HO area indiv sig

Heritage Overlay Numbers

HO783

HO1962

Heritage Listing

Greater Geelong City

Statement of Significance

Last updated on -

LOCAL SIGNIFICANCE - INCLUDED IN HERITAGE PRECINCT

Statement of Significance

59 Weller appears to have been built circa 1864 and 1882 for Isaac Bailey and remained the property of his family for at least 25 years. The cottage design is typical for the Early Victorian period of the previous decade however, ther decorative wall detailing is most unusual. It is of local significance.

References

REFERENCES Borough of Geelong West Rate Books, 19001, 188990, 18834, 18789, 18756.

Thomson Ward Rate Books, 1875, 1874, 18678, 18645, 18612.

Villamanta Ward Rate Books, 185960, 1854. page. 2

Heritage Study/Consultant	Greater Geelong - City of Geelong West Urban Conservation Study, Huddle, Aitken and Honman, 1986; Greater Geelong - Ashby Heritage Review, D Rowe and W Jacobs, 2010;
Hermes Number	18027
Property Number	

Physical Description 1

DESCRIPTION

It is a modest single storey brick building set close to the street frontage. The steeply pitched double gable roof is clad in corrugated iron. The gable ridge traverses the block as was common and can be compared with 20 John Steet . The central door with fanlight above is flanked on either side by a doublehung window. Above these are brick voussoirs. Simple ornamental wall detailing has been effected by a recessed central section which is delineated by clean vertical and horizontal lines. Similar decorative brickwork can be seen on 90 Hope Street.

This place/object may be included in the Victorian Heritage Register pursuant to the Heritage Act 2017. Check the Victorian Heritage Database, selecting 'Heritage Victoria' as the place source.

For further details about Heritage Overlay places, contact the relevant local council or go to Planning Schemes Online <http://planningschemes.dpcd.vic.gov.au/>