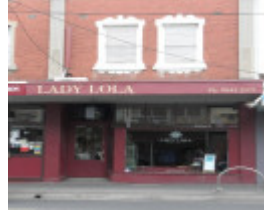


---

## Pair of shops



103-107 Lygon Street  
Brunswick East



103-107 Lygon Street  
Brunswick East



103-107 Lygon Street  
Brunswick East



103-107 Lygon Street  
Brunswick East

---

### Location

103-107 Lygon Street BRUNSWICK EAST, MORELAND CITY

### Municipality

MERRI-BEK CITY

### Level of significance

Rec for HO area contributory

### Heritage Listing

Merri-bek City

---

### Statement of Significance

Last updated on -

This place is a contributory element of Lygon Street Precinct E. Please refer to the Hermes precinct citation for a statement of significance, description and history.

Contributory elements are defined as "those that contribute to the significance of the Heritage Place. These should be identified in the Statement of Significance or other heritage assessment document, such as a heritage study" (Heritage Council of Victoria, *The Heritage Overlay, Guidelines for Assessing Planning Permit Applications*, Public Draft 2007, page 16).

## Theme

### 5. Building Victoria's industries and workforce

Heritage Study/Consultant Moreland - Lygon Street Heritage Study Stage 2, Context Pty Ltd, 2012;

Hermes Number 184581

Property Number

---

## Physical Description 1

Three 2-storey Edwardian shops, red brick with render detail (mostly unpainted), 103 has a partially intact bullnose verandah, 107 has original shopfront

*This place/object may be included in the Victorian Heritage Register pursuant to the Heritage Act 2017. Check the Victorian Heritage Database, selecting 'Heritage Victoria' as the place source.*

*For further details about Heritage Overlay places, contact the relevant local council or go to Planning Schemes Online <http://planningschemes.dpcd.vic.gov.au/>*