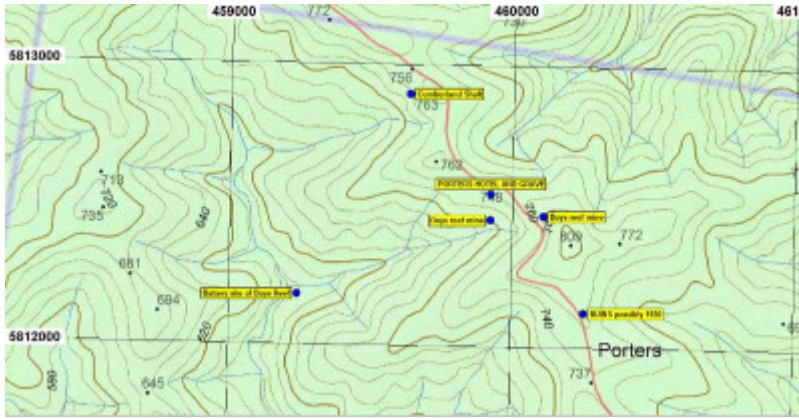


1884 Topographic Map



porters boys reef, 1865 Goldfields Map (titled GF65)



porters topo.jpg

Location

SPRINGS ROAD YANGOURA, WELLINGTON SHIRE

Municipality

WELLINGTON SHIRE

Level of significance

Heritage Inventory Site

Heritage Inventory (HI) Number

H8222-0019

Heritage Listing

Victorian Heritage Inventory

Historical Significance State Forest - subject to timber harvesting activities

Other Names PORTER'S HALFWAY HOSUE,

Hermes Number 191931

Property Number

History

Believed to have been established by Paker. William Cook and Timothy O'Sullivan in 1862.

This place/object may be included in the Victorian Heritage Register pursuant to the Heritage Act 2017. Check the Victorian Heritage Database, selecting 'Heritage Victoria' as the place source.

For further details about Heritage Overlay places, contact the relevant local council or go to Planning Schemes Online <http://planningschemes.dpcd.vic.gov.au/>