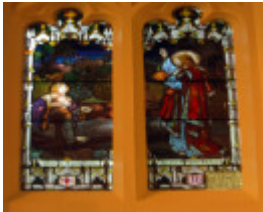

Stained Glass Window at Maffra St.John's Anglican Church



Maffra St Johns Anglican Church

Location

Church Street, Maffra, WELLINGTON SHIRE

Municipality

WELLINGTON SHIRE

Level of significance

-

Heritage Listing

Vic. War Heritage Inventory

Heritage
Study/Consultant

Vic War Heritage Inventory - Stained Glass Memorial Windows Study, Bronwyn
Hughes, 2013;

Architect/Designer

Dancey, George H, Brooks, Robinson & Co, Wheildon, William,

Hermes Number

197023

Property Number

Memorial Window References & Acknowledgements

AWM Commemorative Roll; Australian Red Cross Society Wounded and Missing Enquiry Bureau files, 1914-18 War 1DRL/0428; *Maffra Spectator*, 24 February 1919, p.3; *Gippsland Times*, 27 February 1919, p.3; 31 March 1919, p.3; 19 June 1919, p.3; 17 February 1921, p.3; 2 May 1935, p.8; <http://www.maffra.net.au/heritage/riggall.htm>

Memorial Window Subject

The Raising of Lazarus

Memorial Window Text

[LH] Son be of good cheer; thy sins be forgiven thee Matt. 9C.2v. [RH] Inasmuch as ye have done it unto one of the least of these my brethren, ye have done it unto me. Matt. 28C:40v.

Memorial Window Inscription

To the Glory of God and in loving memory of Louie B. Riggall V.A.D. who gave her life for the sick and wounded at Rouen, August 31st 1918

Memorial Window Description & History

A memorial to Miss Louie Riggall was unveiled by the Bishop of Gippsland, Dr. Cranswick, on Sunday 30 March 1919 in the presence of her family, friends and an overflow congregation. The window, the gift of her family, was designed and made by Brooks, Robinson & Co. and the subject, *The Raising of Lazarus* was chosen to illustrate 'Service' and 'the ministry in particular of women'. In his address, Dr. Cranswick recounted the mass of mourners who attended her funeral in Rouen to honour a woman who had 'given her service and her life freely for Empire'. The Riggall family were well-known graziers and horse breeders in the Maffra district who participated in the community through service on the local Maffra Shire Council and local voluntary organisations. Sister Riggall continued this service by leaving a bequest to incapacitated soldiers that was to be distributed through the Maffra Soldiers' Welfare League. A plaque to Sister Riggall was erected in the Maffra Memorial Hall in 1935.

Louisa B. Riggall (1868-1918) was one of eleven children born to Edward and Martha Riggall. She started life at Castlemaine, but the family moved to Gippsland in 1874. Louie Riggall showed early talent as a painter and was trained at Sale, Bendigo (under A.T. Woodward) and Paris before supporting herself through her work, notably her portraiture. She joined the Voluntary Aid Detachments of the British Red Cross (Australian branch) and began her war service at Broadmeadows before travelling to Egypt in October 1915. After working in the 14 Australian General Hospital for nine months, she spent time in England before being placed in charge of the Red Cross store at 1 General Hospital Rouen, France, where her fluency in French was an invaluable asset. Lieutenant-Colonel Murdoch officially recorded the success of her work and she was mentioned in despatches. Her death was caused by a cerebral haemorrhage; she was buried at St. Sever Cemetery, Rouen.

This place/object may be included in the Victorian Heritage Register pursuant to the Heritage Act 2017. Check the Victorian Heritage Database, selecting 'Heritage Victoria' as the place source.

For further details about Heritage Overlay places, contact the relevant local council or go to Planning Schemes Online <http://planningschemes.dpcd.vic.gov.au/>