

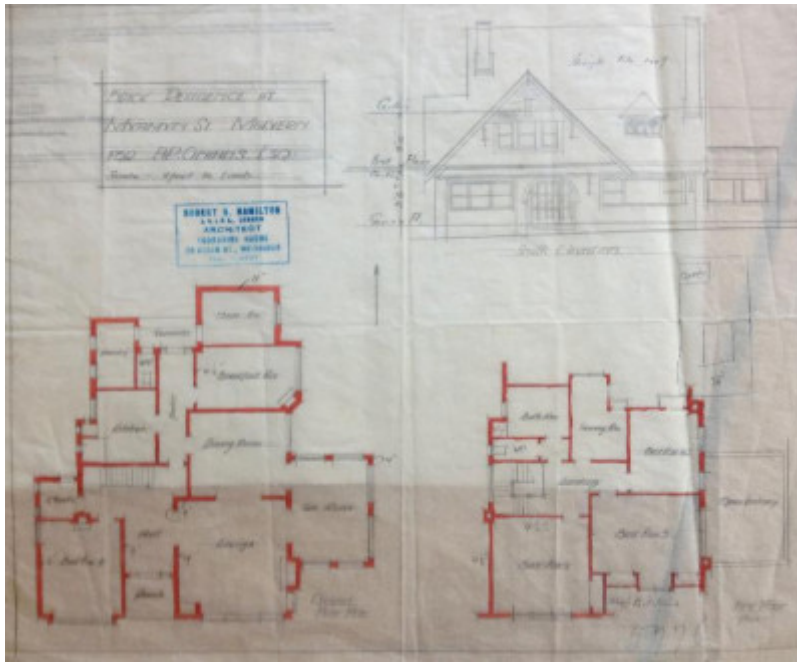
## Residence



13 Myamyn Street, Armadale



Recommended extent of heritage overlay at 13 Myamyn Street, Armadale.



1925 City of Malvern building application plan

---

## Location

13 Myamyn Street ARMADALE, STONNINGTON CITY

## Municipality

STONNINGTON CITY

## Level of significance

Included in Heritage Overlay

## Heritage Overlay Numbers

HO526

## Heritage Listing

Stonnington City

---

## Statement of Significance

Last updated on -

Note that the relevant HERCON criteria are shown in brackets.

### *What is Significant?*

The house at 13 Myamyn Street, Armadale is an attic storey English Domestic Revival style building with Shingle

style overtones. It was built c1926 to designs by the noted interwar architect Robert Bell Hamilton. The house site was created through a subdivision of the nineteenth century Myamyn mansion estate.

Elements that contribute to the significance of the place include (but are not limited to):

- The original external form, materials and detailing of the building.
- The unpainted state of the brick and terracotta elements.
- The highly intact condition of the exterior.
- The legibility of the original built form in views from the public realm.
- The domestic garden setting (but not the fabric of the garden itself).
- The low height of the brick front fence.
- The visually unobtrusive character and siting of the garage.

#### *How is it significant?*

The house at 13 Myamyn Street, Armadale is of local architectural significance to the City of Stonnington.

#### *Why is it significant?*

The house is architecturally significant as an impressive and highly intact interwar English Domestic Revival style house by renowned architect Robert Bell Hamilton (Criterion D). It is notable for its strongly composed gable roof form, evoking the East Coast American Shingle style (Criterion E).

Heritage Study/Consultant	Stonnington - City of Stonnington Interwar Houses Study, Bryce Raworth Pty Ltd, 2014;
Construction dates	1926,
Architect/Designer	Hamilton, Robert B.,
Hermes Number	197692
Property Number	

---

## Physical Description 1

13 Myamyn Street is an English Domestic Revival style attic storey residence with a compact plan form and strongly expressed intersecting gables. The roof is clad in terracotta shingles and punctuated by tall, simply detailed chimneys. Darker terracotta shingles are used for gable infill, which sits on bracketed eaves above attic storey windows. Clinker brick is used for the walls, relieved by thin bricks or tiles framing the attic storey windows. A shallow skillion roof runs across the facade sheltering the entry porch and adjacent windows. The entry porch has timber Old English style posts and brackets. The double-hung timber framed windows with diamond pattern leadlight glazing are also characteristic of the Old English mode.

The house is virtually intact insofar as it presents to the street apart from an apparently non-original window frame in the lower west gable end. The original architectural drawings show a different round arched entry porch design, which was presumably not built.

## Local Historical Themes

The house at 13 Myamyn Street, Armadale illustrates the following themes, as identified in the *Stonnington Thematic Environmental History* (Context Pty Ltd, 2006):

8.1.3 - The end of an era - mansion estate subdivisions in the twentieth century

8.4.1 - Houses as a symbol of wealth, status and fashion

The house is of some historical interest as evidence of a major phase of development that took place in the 1920s and 1930s when many of Stonnington's grand nineteenth century mansion estates were subdivided to create prestigious residential enclaves (TEH 8.1.3 The end of an era - mansion estate subdivisions in the twentieth century). It also illustrates the role of houses generally, and English Domestic Revival style houses in particular, as symbols of wealth, status and taste for Melbourne's middle and upper classes of the interwar period (TEH 8.4.1 - Houses as a symbol of wealth, status and fashion).

*This place/object may be included in the Victorian Heritage Register pursuant to the Heritage Act 2017. Check the Victorian Heritage Database, selecting 'Heritage Victoria' as the place source.*

*For further details about Heritage Overlay places, contact the relevant local council or go to Planning Schemes Online <http://planningschemes.dpcd.vic.gov.au/>*