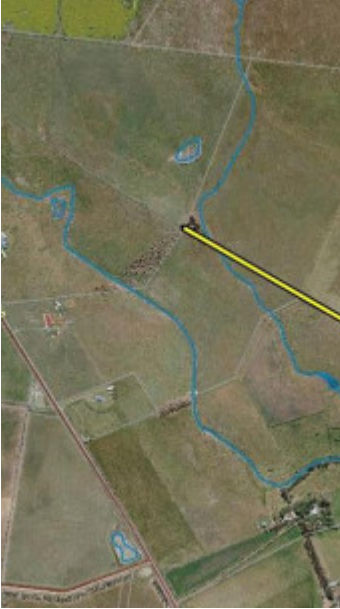


---

## Dry Stone Wall R302 - Internal Property Wall



Dry Stone Wall R302

---

### Location

707-775 Blackhill Road and 783-829 Blackhill Road TOOLERN VALE, MELTON CITY

### Municipality

MELTON CITY

### Level of significance

Included in Heritage Overlay

### Heritage Overlay Numbers

HO202

### Heritage Listing

Melton City

---

## Statement of Significance

Last updated on -

### She-Oak Hill Dry Stone Wall Precinct - Statement of Significance

The She-Oak Hill Dry Stone Wall Precinct is significant as a collection of characteristic and highly intact dry stone walls situated between two different types of volcanic eruption points; in an intact, rural setting in which the unbroken lengths of stone wall remain as a unifying feature of the landscape. The cultural landscape also features two substantial bluestone mid nineteenth century homesteads and associated farm complexes, and two other heritage dwellings dating to the 1880s and the 1920s. The walls are significant for their length and range of all-stone and composite types. It demonstrates nineteenth century rural settlement patterns and a now largely superseded type of fence construction, and has high potential to provide both research and educational information regarding mid-nineteenth and early twentieth century fencing practices within Victoria.

The She-Oak Hill Dry Stone Wall Precinct is historically significant at the LOCAL level (AHC A3, A4, B2, D2). It includes some of the major walls in the Shire, in terms of length and variety of wall types; the longest dry stone wall in the Shire (3.8 kilometres); high and long all-stone walls; one of the two best surviving examples of the most common style of wall in the Shire (composite stone and post-and-wire fences); composite walls (some with remnants of early post and rail tops); and walls with different stone types, ranging from the typical Melton heavy round lava basalt, to a rare red hued wall with angled vesicular fieldstone near the She- Oak Hill scoria cone. The precinct demonstrates, in the arrangement of walled enclosures and paddocks, early farming settlement patterns of Melbourne's western plains. The cultural landscape includes four dwellings of heritage significance, ranging from substantial nineteenth century bluestone homesteads (Pinewood and Glencoe, HO 37 and HO 14), rare in the Shire; to a Federation era timber cottage (Angus Downs, HO 15); and an interwar timber bungalow (Kororoit Park Stud, HO 39). The precinct is historically significant for its association with the pioneer settler John Beaty and his family, who built (or commissioned) the construction of all but but one of the walls.

The She-Oak Hill Dry Stone Wall Precinct is aesthetically significant at the LOCAL level(AHC E1). The dry stone walls which cross the landscape in regular enclosure patterns, make a fundamental statement about human interaction with the volcanic landscape of which they are a part. The precinct has views of two volcanic sources: the more vertical and conical shape of She Oak Hill to the south; and the broader shape of Aitkens Hill, a 'lava shield' volcano to the north. While the most publically accessible walls are not high or dramatic, their original rural context is intact, ensuring that the walls are a prominent feature of the cultural landscape. The precinct affords beautiful pastoral views of farms, walls and wooded hills in the distance in undulating terrain, which contrasts to all the other very flat precincts. Numerous individual walls, including Walls R309 and R297 have excellent sculptural qualities and are expressive of the skilled craftsmanship of their builders.

The She-Oak Hill Dry Stone Wall Precinct is scientifically significant at the LOCAL level (A1, C2). The walls in the precinct demonstrate two different type of volcanic eruption points: She Oak Hill (a 'scoria hill' which emitted a more irregular vesicular stone); and Aitkens Hill (a 'lava shield' volcano which emitted a heavy round lava basalt). The walls also have potential to yield research information regarding nineteenth century rural settlement patterns and farm management, and ways of life on Melbourne's western plains. In particular they have high potential for research of mid nineteenth century wall construction techniques, and the early twentieth century modification of these for changing farming practices.

The She-Oak Hill Dry Stone Wall Precinct is socially significant at the LOCAL level (AHC G1). The precinct has the potential to educate the community in regard to wall construction techniques, and also nineteenth century farm management, settlement patterns, and ways of life.

Overall, the She-Oak Hill Dry Stone Wall Precinct is of LOCAL heritage significance.

Heritage Study/Consultant	Melton - Shire of Melton Dry Stone Walls Study, Jim Holdsworth, Raelene Marshall and David Moloney (2007) and Sera Jane Peters (2011), 2011;
Hermes Number	198061

Property Number

---

*This place/object may be included in the Victorian Heritage Register pursuant to the Heritage Act 2017. Check the Victorian Heritage Database, selecting 'Heritage Victoria' as the place source.*

*For further details about Heritage Overlay places, contact the relevant local council or go to Planning Schemes Online <http://planningschemes.dpcd.vic.gov.au/>*