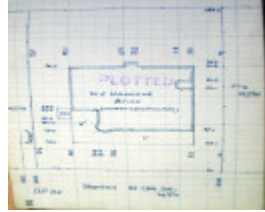

Dwelling



4 Stephen Street, Newtown



GWST Fieldbook no. 237, 28
Aug 1922, p.2, Barwon
Water.

Location

4 Stephen Street NEWTOWN, GREATER GEELONG CITY

Municipality

GREATER GEELONG CITY

Level of significance

Incl in HO area not sig

Heritage Overlay Numbers

HO2006

Heritage Listing

Greater Geelong City

Statement of Significance

Last updated on -

Not Significant- Newtown West Heritage Area

History/Notes

On 17 May 1922, a building permit was granted for the construction of this brick Bungalow at 4 Stephen Street by T. Pescott and Sons for Walter Edwin Hancock (c.1877-1956) and his wife, Charlotte (nee Spikins) Hancock

(1874-1958), retired farmers from the Donald area. The Hancock family were involved in the Newtown Presbyterian Church, with Walter being the Church secretary in 1924 as well as being a member of the Church cricket team. Walter and Charlotte lived at 4 Stephen Street until their deaths in 1956 and 1958 respectively.

The brick interwar Californian Bungalow styled dwelling was originally constructed with single storey gabled roof forms and a flat-roofed return verandah. While original features survive in the timber framed windows, verandah and gable infill, two storey additions (constructed in 1991) now dominate the dwelling. A brick garage was built in 1992 and the existing front brick fence with metal palisade bays was constructed in 2015.

References:

Victorian Births, Deaths & Marriages Indexes, Dept. of Justice.
Newtown Rate Books, 1923, 1925, 1940, 1950, Geelong Library & Heritage Centre.
Newtown Building Permit 17 May 1922, City of Greater Geelong.
Geelong Advertiser, 21 August 1924, 25 November 1927.
The Argus, 1 November 1956, p.14.

Heritage Study/Consultant	Greater Geelong - Newtown West Heritage Review 2016, D. Rowe & W. Jacobs, 2016;
Hermes Number	199301
Property Number	

This place/object may be included in the Victorian Heritage Register pursuant to the Heritage Act 2017. Check the Victorian Heritage Database, selecting 'Heritage Victoria' as the place source.

For further details about Heritage Overlay places, contact the relevant local council or go to Planning Schemes Online <http://planningschemes.dpcd.vic.gov.au/>