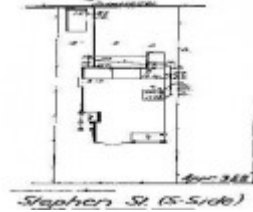

Dwelling



22 Stephen Street, Newtown



GWST Drainage Plan no. 6491, 1928, Barwon Water.

Location

22 Stephen Street NEWTOWN, GREATER GEELONG CITY

Municipality

GREATER GEELONG CITY

Level of significance

Incl in HO area contributory

Heritage Overlay Numbers

HO2006

Heritage Listing

Greater Geelong City

Statement of Significance

Last updated on -

Contributory Significance- Newtown West Heritage Area

History/Notes

The site at 22 Stephen Street comprised Lot 4 of the Brooklyn Estate advertised for sale by public auction on 24 March 1923. The estate had earlier been part of Alfred Price's "Brooklyn" property (now addressed as 132-134 Aphrasia Street). The existing timber dwelling was built in 1928 by R.J. Gunn for Leslie and Lillian Long. They

were in occupation of the dwelling by 1929.

Leslie Stafford Long was born in 1887, the son of Robert Selwin Long and Harriet (nee Britten) Long. He married Miss Lillian Hendy Golden in 1918. She was born at Avoca in c.1888. L.S. Long was a clerk. They were long time residents of 22 Stephen Street.

The original design of the timber Bungalow constructed for L. and L. Long is clearly discernible when viewed from the front. The original fabric comprises the main single storey gabled roof form that traverses the site, together with the gable roofs projecting towards Stephen Street, the minor gable having a bowed bay window. Also at the front is a hipped verandah, with another original verandah at the side, forming the main entrance. This side verandah is supported by an early rendered pier. Other early features include the timber framed double hung windows, shingling and brackets in the gable ends, wide eaves, panelled and battening in the gable ends and the face red brick chimney. The cream brick chimney appears to have been introduced in the mid 20th century.

The rear two storey additions were constructed in 2006 (but the original dwelling remains the prominent feature) and the carport was built in 2010.

References:

Victorian Births, Deaths & Marriages Indexes, Dept. of Justice.

Newtown Rate Books, 1928, 1929, 1935.

Newtown Building Permit 27 March 1928, City of Greater Geelong.

Building Permit 736/2006, Building consent 656/2010, City of Greater Geelong.

Heritage Study/Consultant	Greater Geelong - Newtown West Heritage Review 2016, D. Rowe & W. Jacobs, 2016;
---------------------------	---

Hermes Number	199317
---------------	--------

Property Number	
-----------------	--

This place/object may be included in the Victorian Heritage Register pursuant to the Heritage Act 2017. Check the Victorian Heritage Database, selecting 'Heritage Victoria' as the place source.

For further details about Heritage Overlay places, contact the relevant local council or go to Planning Schemes Online <http://planningschemes.dpcd.vic.gov.au/>