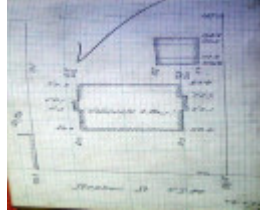

Dwelling - Hightrees



26 Stephen Street, Newtown



Dwelling at 26 Stephen Street, n.d., Wilsons Real Estate at realestate.com.au



GWST Fieldbook no. 286, 29 Nov 1926, p.27, Barwon Water.

Location

26 Stephen Street NEWTOWN, GREATER GEELONG CITY

Municipality

GREATER GEELONG CITY

Level of significance

Incl in HO area indiv sig

Heritage Overlay Numbers

HO2006

Heritage Listing

Greater Geelong City

Statement of Significance

Last updated on -

Local Significance- Newtown West Heritage Area

History/Notes

In 1925, Mrs Mary McLaughlin purchased the vacant land at 26 Stephen Street. She commissioned the builder, Fred Coulson, to construct this substantial two storey dwelling in 1926. It was designed by Cleverdon and

McLaughlin, architects, with Dugald McLaughlin being the son of Mary McLaughlin. She was in occupation by 1927 and she lived there until her death in 1933.

Mrs Mary McLaughlin (nee McFarlane) was born at Warragul in c.1875 to Dugald and Sarah (nee McInnis) McFarlane. She married James McLaughlin, a grazier of Casterton, in 1902. They had three sons: Dugald (born 1903), James Ronald (born 1905) and John Myles (born 1909). They lived at the family farm, "Sunny Hill" at Casterton until James McLaughlin's death in November 1912. By 1914, Mrs McLaughlin and her sons had left the farm. Prior to the construction of the dwelling in Stephen Street, Mrs McLaughlin resided at 52 Sharp Street, Newtown.

The substantial, two storey, rendered concrete brick, interwar Georgian Revival styled dwelling is intact when viewed from Stephen Street. The original design qualities include its symmetrical composition, tiled hipped roof form, regular bays of timber framed 12 paned double hung windows, pilastered and recessed entrance porch, timber entrance door and rendered brick chimneys. The gabled entrance portico has been introduced. The front fence was constructed in recent years. The concrete block wall construction may have been manufactured by the Geelong Concrete Company. According to the Geelong Advertiser, the product was 'in demand with builders' and composed of cinders and concrete, are exceptionally light, in light of their large size, and they become lighter with age.' Concrete was also largely used by the Carlton Brewery Company in carrying out alterations and addition to their numerous hotels. Some of the principal designs by Cleverdon were for the Carlton Brewery Company.

References:

Victorian Births, Deaths & Marriages Indexes, Dept. of Justice.
James McLaughlin, Probate Administration files, 1913, VPRS 28/P3 Unit 368 PROV.
Newtown Rate Books, 1925, 1926, 1927, 1928, 1935, Geelong Library & Heritage Centre.
Newtown Building Permit, 1926, City of Greater Geelong.
Building Permit 3663/2010, 301/2012, City of Greater Geelong.
Geelong Advertiser, 29 August 1924, p.4, 8 June 1925, 11 Aug 1926.
W.H. Cleverdon R.V.I.A. Personal file, box 86, env. 5, SLV.
Horsham Times, 4 April 1941.

Heritage Study/Consultant	Greater Geelong - Newtown West Heritage Review 2016, D. Rowe & W. Jacobs, 2016;
Hermes Number	199320
Property Number	

This place/object may be included in the Victorian Heritage Register pursuant to the Heritage Act 2017. Check the Victorian Heritage Database, selecting 'Heritage Victoria' as the place source.

For further details about Heritage Overlay places, contact the relevant local council or go to Planning Schemes Online <http://planningschemes.dpcd.vic.gov.au/>