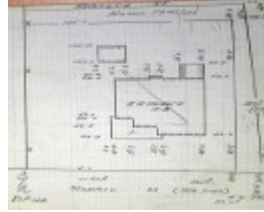

Dwelling



Stephen 28 .JPG



GWST Fieldbook no. 267, 16
April 1924, p.4.2, Barwon
Water.

Location

28 Stephen Street NEWTOWN, GREATER GEELONG CITY

Municipality

GREATER GEELONG CITY

Level of significance

Incl in HO area contributory

Heritage Overlay Numbers

HO2006

Heritage Listing

Greater Geelong City

Statement of Significance

Last updated on -

Contributory Significance- Newtown West Heritage Area

History/Notes

In 1924, this timber dwelling at 28 Stephen Street was built by Richard Wellard, a builder, presumably as an investment. He sold it to Alexander Kilpatrick in 1927.

Alexander Kilpatrick was born at Colac in 1882 to Alexander and Mary (nee Harlock) Kilpatrick. He married Miss Nellie Martin in Colac in 1902, the Colac Herald reporting that 'an event of such importance concerning two families so well-known as highly respected and esteemed caused unusual interest to centre in the proceedings.' Kilpatrick was a farmer at Alvie. In the early years of the 20th century he took an active interest in politics and in 1911 he was the inaugural Vice President of the Alvie Branch of the People's Party. Alexander and Nellie Kilpatrick retired to 28 Stephen Street. In 1934, he relocated to Fernleigh Street, Chilwell, where he died in June of that year, aged 50.

The timber interwar Californian Bungalow retains much of its original design, including the principal gabled roof form that traverses the site, and the projecting gables towards the front, the small gable comprising a return verandah supported by tapered, random stone piers and balustrades with concrete cappings. Other early features include the timber framed double hung windows (including the flat-roofed bank of boxed windows at the front), double entrance door opening, gable infill, brick chimney and wide eaves. Two storey additions constructed at the rear in 1996 are not visible from Stephen Street. There is an introduced gabled carport and pointed timber picket fence and gates at the front.

References:

Victorian Births, Deaths & Marriages Indexes, Dept. of Justice.
Newtown Rate Books, 1925, 1926, 1927, 1928, 1930, 1934, 1935, Geelong Library & Heritage Centre.
Newtown Building Permit, 28 January 1925, City of Greater Geelong.
Building Permit 2670/1996, City of Greater Geelong.
The Colac Herald, 2 July 1902, 5 April 1911, p.2.
The Argus, 30 June 1934, p.13.

Heritage Study/Consultant	Greater Geelong - Newtown West Heritage Review 2016, D. Rowe & W. Jacobs, 2016;
Hermes Number	199321
Property Number	

This place/object may be included in the Victorian Heritage Register pursuant to the Heritage Act 2017. Check the Victorian Heritage Database, selecting 'Heritage Victoria' as the place source.

For further details about Heritage Overlay places, contact the relevant local council or go to Planning Schemes Online <http://planningschemes.dpcd.vic.gov.au/>