

---

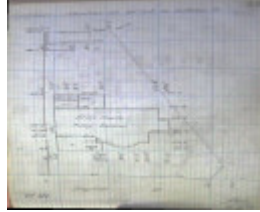
## Dwelling



32 Stephen Street, Newtown



32 Stephen Street, Newtown



GWST Fieldbook no. 323A,  
11 May 1938, p.29, Barwon  
Water.

---

### Location

32 Stephen Street NEWTOWN, GREATER GEELONG CITY

### Municipality

GREATER GEELONG CITY

### Level of significance

Incl in HO area contributory

### Heritage Overlay Numbers

HO2006

### Heritage Listing

Greater Geelong City

---

### Statement of Significance

Last updated on -

Contributory Significance- Newtown West Heritage Area

#### History/Notes

In 1938, Edward Coulson sold the allotment now addressed as 32 Stephen Street to Leslie G.J. Creed who had the existing brick dwelling and a garage designed by J. Gordon Williams, Geelong architect, at this time. It

appears to have been built by H.R. Leach as he was listed as the builder in the Newtown Council Building Permit Register on 20 April 1938. However, the GWST Fieldbook Plan for 11 May 1938 listed F.R. Pilley as the builder.

Leslie George Jacks Creed was born in 1886 at Ceres to John and Elizabeth (nee Webb) Creed. He married Miss Ellen Drysdale of Little River in 1924. It appears that for much of their married life they held a farm at Murrabit. Creed sold his sheep at the fat lamb sales in November 1938, possibly immediately prior to his retirement to his newly-constructed dwelling at 32 Stephen Street. Leslie Creed died at Murrabit in 1954, although his permanent residence was in Stephen Street.

The brick interwar Bungalow remains largely intact to its original design. This includes the main tiled gable roof form that traverses the site, the main jerkin head wings that project at the front and rear, minor projecting front gabled wing with bowed bay window and the flat-roofed front verandah supported by brick piers. Other intact design qualities include the timber framed double hung windows, brick chimneys, timber gable brackets, wide eaves, gable infill (battening, strapping and lancet ventilators) and front door opening. The attic window at the front appears to have been altered or introduced. Alterations and additions carried out in 2010 have not comprised the dwelling's significance. The front fence, built in 2013, is in keeping with the character of the dwelling. A new garage has been built at the rear, fronting Ruthven Street.

#### References:

Victorian Births, Deaths & Marriages Indexes, Dept. of Justice.  
Newtown Rate Books, 1935, 1936, 1937, 1938, 1940, Geelong Library & Heritage Centre.  
Newtown Building Permit, 1938, City of Greater Geelong.  
The Argus, 18 November 1938, 2 July 1954.  
Building Permits 656/2003, 3703/2010, 3694/2013, City of Greater Geelong.  
Cazalys Contractor Reporter, 8 March 1938, State Library of Victoria.

Heritage Study/Consultant	Greater Geelong - Newtown West Heritage Review 2016, D. Rowe & W. Jacobs, 2016;
Hermes Number	199323
Property Number	

---

*This place/object may be included in the Victorian Heritage Register pursuant to the Heritage Act 2017. Check the Victorian Heritage Database, selecting 'Heritage Victoria' as the place source.*

*For further details about Heritage Overlay places, contact the relevant local council or go to Planning Schemes Online <http://planningschemes.dpcd.vic.gov.au/>*