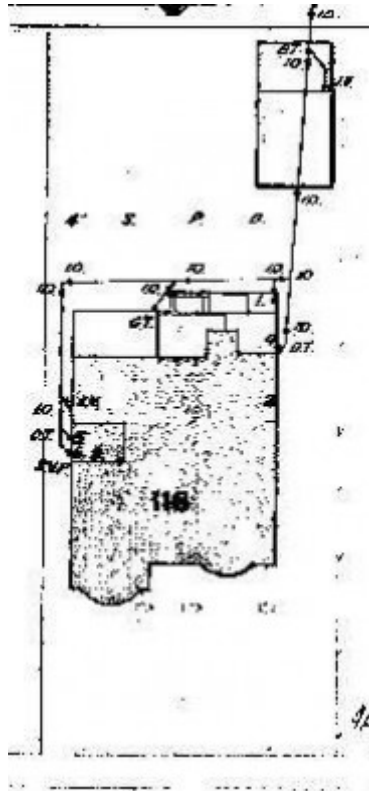


Dwelling



116 Aphrasia Street,
Newtown



GWST Drainage Plan no. 4521A, 1929, Barwon Water.

Location

116 Aphrasia Street NEWTOWN, GREATER GEELONG CITY

Municipality

GREATER GEELONG CITY

Level of significance

Incl in HO area contributory

Heritage Overlay Numbers

HO2006

Heritage Listing

Greater Geelong City

Statement of Significance

Last updated on -

Contributory Significance- Newtown West Heritage Area

History/Notes

The dwelling at 116 Aphrasia Street was built in 1929, possibly by Berryman and Taylor, for Clarence Gordon Taylor, a retired farmer, and his wife, Evelyne (Evelyn).

C.G. Taylor was born at Portland in 1892, the son of Henry Dennison and Catherine Elizabeth (nee Dart) Taylor. He became a wheat, sheep and cattle farmer at Brim in the Warracknabeal district before enlisting to serve in the First World War in 1916. It is unclear whether he served as in 1917 he married Miss Evelyne Marshman (born Brim, 1894). They they had four children: Elsie, Edgar, Keith and Reg.

Clarence and Evelyne Taylor's retirement to Aphrasia Street in 1929 was to be short-lived. He sold the property in 1932 and took up a farm at Highton. There, he had Jerseys, a dairy and poultry, the property being reported in The Age as a 'model farm'. C.G. Taylor died in 1951 at his home, 205 Noble Street, aged 59 years.

The single storey rendered and face brick dwelling presents several original interwar Bungalow design qualities including the main gabled roof form that traverses the site and the projecting minor gabled wing at the front. These roofs are clad in early tiles. There is also an early flat-roofed front verandah supported by prominent tapered rendered piers and squat paired posts.

The verandah also has exposed rafter ends and a solid rendered balustrade. Other early features include the brick chimney with terra cotta pot, broad eaves, timber framed double hung box windows (including the bowed bays at the front) and the front double door opening. There is an introduced low tubular steel fence at the front.

References:

Victorian Births, Deaths & Marriages Indexes, Dept. of Justice.

Newtown Rate Books, 1929, 1930, 1931, 1932, 1935, Geelong Library & Heritage Centre.

Beulah Standard, 16 March 1916.

Ballarat Star, 4 May 1915, 2 October 1918, 10 September 1919.

The Argus, 31 March 1951, p.18. The Argus, 31 March, 1951, p.18.

The Age, 30 September 1935.

C.G. Taylor, Probate Administration files, 1951, VPRS 28/P4 Unit 286, VPRS 7591/P2 Unit 1558 PROV.

Newtown Building Permit, 23 Oct 1928, City of Greater Geelong, listed Berryman & Taylor as builders of a dwelling in Aphrasia St (no dwelling in Aphrasia St was listed for construction in 1929).

Hermes Number 199336

Property Number

This place/object may be included in the Victorian Heritage Register pursuant to the Heritage Act 2017. Check the Victorian Heritage Database, selecting 'Heritage Victoria' as the place source.

For further details about Heritage Overlay places, contact the relevant local council or go to Planning Schemes Online <http://planningschemes.dpcd.vic.gov.au/>