

---

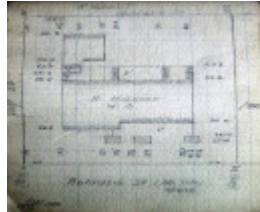
## Dwelling



128 Aphrasia Street,  
Newtown



Annie Hibbins, possibly with  
her brother Robert Norman  
Hair, n.d., updated to KikiTree  
online by Kirsty Ward.



GWST Fieldbook no. 147, 13  
Dec 1922, p.30, Barwon  
Water

---

### Location

128 Aphrasia Street NEWTOWN, GREATER GEELONG CITY

### Municipality

GREATER GEELONG CITY

### Level of significance

Incl in HO area contributory

### Heritage Overlay Numbers

HO2006

### Heritage Listing

Greater Geelong City

---

### Statement of Significance

Last updated on -

Contributory Significance- Newtown West Heritage Area

#### History/Notes

The land at 128 Aphrasia Street formed lot 10 of the Devon Estate advertised for sale by public auction on 30 March 1912. The estate had earlier been owned by Lloyd Hooper, grocer. The First World War appears to have

delayed much of the building development as part of this subdivision. The land was owned by James Maddern, gentleman, in 1912. He sold it to Robert Hampton in 1920 and he in turn sold it to Mrs Annie Hibbins in 1923. She had this house built by Denno and Neunhoffer at this time.

Annie Watson Hibbins (nee Hair) was born in Geelong in 1892, the daughter of Robert and Euphemia (nee Nicholson) Hair. She married Richard Hibbins (born Alexander Lead, Talbot in 1891) in 1916. They had four children: Robert, Richard Kenneth, Margaret and Doris. It seems that the dwelling was occupied by Mrs Hibbins' son, Richard, a plumber, until she sold it to William Joseph McNeill, retired farmer of Aphrasia Street, in 1925. He in turn sold it to Miss Sylvia Beryl Palmer in 1927.

The existing timber dwelling mostly reflects its original interwar Bungalow design in the gabled roof forms clad in corrugated sheet metal, gable infill, broad eaves, timber framed double hung windows and front door opening. The projecting minor front gable on the east side was originally part of the front verandah and it has been infilled with a bank of timber framed double hung windows at the front, aluminium framed windows on the side, and weatherboard wall cladding. There are two storey additions at the rear but the original single storey portion is the dominant feature when viewed from Aphrasia Street. There is an introduced high capped timber fence.

#### References:

Victorian Births, Deaths & Marriages Indexes, Dept. of Justice.

Certificates of Title, vol. 2785, fol. 924, vol. 3639, fol. 657.

Newtown Rate Books, 1920, 1922, 1923, 1924, 1925, 1935, Geelong Library & Heritage Centre.

Newtown Building Permit, 6 December 1922, City of Greater Geelong.

'Richard Hibbins', Ancestry Message Board online at <http://boards.tiscali.ancestry.co.uk/thread.aspx?mv=flat&m=8470&p=localities.oceania.australia.vic.general>

Heritage Study/Consultant	Greater Geelong - Newtown West Heritage Review 2016, D. Rowe & W. Jacobs, 2016;
Hermes Number	199343
Property Number	

---

*This place/object may be included in the Victorian Heritage Register pursuant to the Heritage Act 2017. Check the Victorian Heritage Database, selecting 'Heritage Victoria' as the place source.*

*For further details about Heritage Overlay places, contact the relevant local council or go to Planning Schemes Online <http://planningschemes.dpcd.vic.gov.au/>*