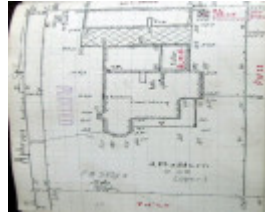


---

## Dwelling - Brooklyn (formerly Hendra)



132 Aphrasia Street,  
Newtown



GWST Fieldbook no. 147, 16  
July 1912, p.24, Barwon  
Water

---

### Location

132 Aphrasia Street NEWTOWN, GREATER GEELONG CITY

### Municipality

GREATER GEELONG CITY

### Level of significance

Incl in HO area indiv sig

### Heritage Overlay Numbers

HO2006

### Heritage Listing

Greater Geelong City

---

### Statement of Significance

Last updated on -

Regional Significance - Newtown West Heritage Area

#### History/Notes

This property is already subject to a heritage overlay, the basis for the overlay being the heritage assessment in Context Pty Ltd, City of Newtown Urban Conservation, 1991.

In addition to the information in the existing heritage citation, the two storey Late Victorian styled brick dwelling originally known as 'Hendra' was designed by the well-known architectural firm, Laird and Barlow, in 1891, for Alfred David Price, grocer.

Further historical details are given in the precinct history.

The principal facade of the original Late Victorian dwelling faces the side (east). The return verandah and balcony are supported by paired turned timber posts have curved solid timber balcony fretwork (with quatrefoil motif cut-outs between the posts) and similar fretwork to the verandah, but with panels of vertically-oriented timberwork (at the main entrance) and timber latticework (for the remainder of the verandah). There are face brick chimneys with multi- corbelled tops. The brick walls are accentuated by red brick bands and voussoirs. There are timber framed double hung windows. At the rear (west) and side (north) of the original dwelling are additions and introduced outbuildings.

#### References:

Geelong Advertiser, 11 January 1892.

Laird & Barlow Contract Book, 1891, GRS210, Geelong Library & Heritage Centre.

Heritage Study/Consultant	Greater Geelong - Newtown West Heritage Review 2016, D. Rowe & W. Jacobs, 2016;
Hermes Number	199345
Property Number	

---

*This place/object may be included in the Victorian Heritage Register pursuant to the Heritage Act 2017. Check the Victorian Heritage Database, selecting 'Heritage Victoria' as the place source.*

*For further details about Heritage Overlay places, contact the relevant local council or go to Planning Schemes Online <http://planningschemes.dpcd.vic.gov.au/>*