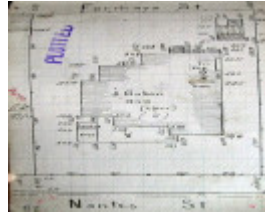

Dwelling



4 Nantes Street, Newtown



GWST Fieldbook no. 147, 11
July 1912, p.13, Barwon
Water

Location

4 Nantes Street NEWTOWN, GREATER GEELONG CITY

Municipality

GREATER GEELONG CITY

Level of significance

Incl in HO area contributory

Heritage Overlay Numbers

HO2006

Heritage Listing

Greater Geelong City

Statement of Significance

Last updated on -

Contributory Significance- Newtown West Heritage Area

History/Notes

The site at 4 Nantes Street originally formed part of a 3 acre landholding owned by George Alexander Stephen, merchant, in

1889. On his death in 1908, the land was subdivided into three allotments, with a large allotment fronting Nantes Street being sold to Daniel Organ McIntyre. In 1909, he subdivided the land into several allotments and lot 8 (the site at 4 Nantes Street) was sold to William McAdam. In 1911, he sold the site to John Robin, a traveller, and he had this house built in 1912-13.

John Robin was born in c.1882, the son of William and Nancy (neeTorode) Robin. He married Miss Joan Le Clere. Tragedy struck the family when they 'lost by death their little daughter Joan.' A traveller, John Robin's life was also cut short at the age of 54 in 1936. The Robin family appears to have relocated to Aphrasia Street by this time, the property at 4 Nantes Street having been sold to Daniel Tait in 1925. He had a room added to the dwelling by Berryman and Turnbull in 1932.

The front portion of the timber dwelling largely reflects its original Federation style design. This includes the main hipped roof form and the projecting minor gables at the front and east side (forming a return verandah), eaves overhang, gable infill, paired timber verandah posts with Art Nouveau timber brackets, verandah balustrades, timber framed casement windows (including the contextually unusual corner windows in the east gable) with leadlighted highlights, leadlighted portal window, front door opening with leadlighted highlights and sidelights, timber bargeboards in the gable ends, brick chimney, and the gable infill (stucco panelling and timber brackets). At the rear are single storey hipped and gabled additions, and gabled attic additions. These alterations and additions were carried out in c.1991, 2001, and 2009.

References:

Victorian Births, Deaths & Marriages Indexes, Dept. of Justice.

Newtown Rate Books 1911-12, 1912-13, 1917-18, 1924, 1925, 1935, Geelong Library & Heritage Centre.

Newtown Building Permit 1932, City of Greater Geelong.

Building Permits, 206/2001, 203/2009, City of Greater Geelong

Certificates of Title, vol. 2121 fol. 075, vol. 3304 fol. 672, vol. 3348 fol. 524.

Heritage Study/Consultant	Greater Geelong - Newtown West Heritage Review 2016, D. Rowe & W. Jacobs, 2016;
Hermes Number	199364
Property Number	

This place/object may be included in the Victorian Heritage Register pursuant to the Heritage Act 2017. Check the Victorian Heritage Database, selecting 'Heritage Victoria' as the place source.

For further details about Heritage Overlay places, contact the relevant local council or go to Planning Schemes Online <http://planningschemes.dpcd.vic.gov.au/>