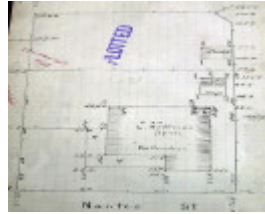

Dwelling - Bellendean



28 Nantes Street, Newtown



GWST Fieldbook no. 52, p.3,
n.d. [c.1916], Barwon Water

Location

28 Nantes Street NEWTOWN, GREATER GEELONG CITY

Municipality

GREATER GEELONG CITY

Level of significance

Incl in HO area contributory

Heritage Overlay Numbers

HO2006

Heritage Listing

Greater Geelong City

Statement of Significance

Last updated on -

Contributory Significance- Newtown West Heritage Area

History/Notes

The property at 28 Nantes Street formed part of the 'Newtown Brae' Estate subdivision of 1912. It was sold to Robert William Charles and he in turn sold it to Leslie Hoffman in 1913. He had this house built in 1914, in anticipation of his marriage to Miss Daisy Geraldine Johnson in the same year. They had two children: Lesley

Geraldine and Cecilia Ray. The house was called 'Bellendean.'

Leslie George Hoffman was born in Geelong in 1890, the son of Herbert Charles and Minnie (nee Gibbs) Hoffman. L.G. Hoffman was appointed a teacher at St. Augustine's Boys' Orphanage, Geelong, where he also became a member of the 'celebrated orphanage band, firstly as the leading cornetists before becoming conductor. The Hoffman family left Nantes Street in 1918 when L.G. Hoffman took up a teaching appointment at St. Vincent's Orphanage, Melbourne, becoming the bandmaster for 30 years. He was also conductor of the South Sydney Band, N.S.W., and was an adjudicator of band contests across the country. He died in Melbourne in 1959.

Although there have been some alterations, the elevated single storey timber Federation styled dwelling reflects its original design. This is especially apparent in the main hipped roof form with projecting minor gabled wing at the front, and the broken back return verandah supported by timber posts with solid timber fretwork. Other early features include the paired timber framed double hung windows in the front gable, bracketed window hood, eaves overhangs, gable brackets and the gable infill. The return verandah has been infilled on the east side, with timber framed windows taking up the front corner. There is also an introduced door opening at the front and additions at the rear. The front has a high capped timber picket fence on a low painted brick base.

References:

Victorian Births, Deaths & Marriages Indexes, Dept. of Justice.
Newtown Rate Books, 1913-14, 1914-15, 1916-17, 1918-19, 1919-20, Geelong Library & Heritage Centre.
Certificates of Title, vol. 3210 fol. 835, vol. 3663 fol. 517, vol. 3753 fol. 479.
Geelong Advertiser, 23 May 1914, 19 November 1918, 27 December 1918.
The Sydney Morning Herald, 23 January 1925. Record (Emerald Hill), 16 October 1938, p.6.
The Advocate, 20 May 1954, 22 July 1954, p.3

Heritage Study/Consultant	Greater Geelong - Newtown West Heritage Review 2016, D. Rowe & W. Jacobs, 2016;
Hermes Number	199377
Property Number	

This place/object may be included in the Victorian Heritage Register pursuant to the Heritage Act 2017. Check the Victorian Heritage Database, selecting 'Heritage Victoria' as the place source.

For further details about Heritage Overlay places, contact the relevant local council or go to Planning Schemes Online <http://planningschemes.dpcd.vic.gov.au/>