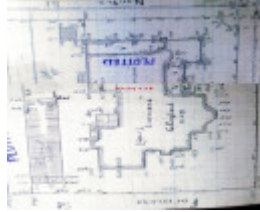

Dwelling - Comara



303 Shannon Avenue,
Newtown



'Comara', October 1927.
Pratt, La Trobe Picture
collection, State Library of
Victoria, H91.160/911.



GWST fieldbook no. 147, 11
July 1912, p.12, Barwon
Water

Location

303 Shannon Avenue NEWTOWN, GREATER GEELONG CITY

Municipality

GREATER GEELONG CITY

Level of significance

Incl in HO area indiv sig

Heritage Overlay Numbers

HO2007

Heritage Listing

Greater Geelong City

Statement of Significance

Last updated on -

Local Significance- Newtown West Heritage Area

History/Notes

The site at 303 Shannon Avenue (originally comprising lots 5 and 6) was owned by Gilbert E. England, manager for Huddart, Parker and Co., in 1910. He commissioned the local architects, Tombs and Durran, to design a 'brick

and wood' residence. Construction was underway by late October 1910 and it was completed in early 1911. England named the dwelling 'Comara'.

Gilbert Edward England was born in c.1866 in Geelong, the son of George and Mary (nee England) England. He married Miss Mary Webb in 1889 and they had four children: Gilbert George, Vera, Lauren and Elma. G.E. England worked for the local shipping company, Huddart, Parker and Co. for 50 years. He also contributed to community life as a member of the Geelong Chamber of Commerce (serving as president in 1913), as well as being a member of the Royal Society of St. George, Mechanics' Institute Committee, Geelong Hospital Committee and the Corio Bowling Club where he was district champion on 7 occasions. England sold 'Comara' to Hugh Robertson, grazier, in 1915. He died in 1930.

The asymmetrical brick Federation styled dwelling is largely reflective of its original and contextually unusual design. This is borne out in the complex hipped and gabled roof forms (the existing tiles appear to have replaced the original tiles), bowed and faceted window bays (with timber framed casements and leadlighted highlights), window hood, return broken back and gabled verandah (supported by brick piers and slender Doric columns), front doorway, gable infill and the two storey gabled weatherboard attic on the north side (the ground and first floor windows appear to have been introduced). Stylistically, the dwelling is comparable to the house at 12 Hermitage Road, Newtown, also designed by Tombs and Durran.

There is a high ripple iron fence with expressed posts and timber fretwork capping (built in 1994) which might be reflective of the early front fence. On the north boundary is a capped timber fence.

References:

Victorian Births, Deaths & Marriages Indexes, Dept. of Justice.
Newtown Rate Books, 1910-11, 1911-12, 1913-14, 1915-16, 1917-18, Geelong Library & Heritage Centre.
Cazalys Contractor Reporter, 11 October 1910, State Library of Victoria.
Geelong Advertiser, 13 September 1910, p.3, 27 October 1910, p.4, 3 October 1912, p.3, 20 September 1913, pp.3-4.
Daily Commercial News & Shipping List (Sydney N.S.W.), 22 November 1930.
Building Permit 4295/1994, City of Greater Geelong.

Heritage Study/Consultant	Greater Geelong - Newtown West Heritage Review 2016, D. Rowe & W. Jacobs, 2016;
Hermes Number	199389
Property Number	

This place/object may be included in the Victorian Heritage Register pursuant to the Heritage Act 2017. Check the Victorian Heritage Database, selecting 'Heritage Victoria' as the place source.

For further details about Heritage Overlay places, contact the relevant local council or go to Planning Schemes Online <http://planningschemes.dpcd.vic.gov.au/>