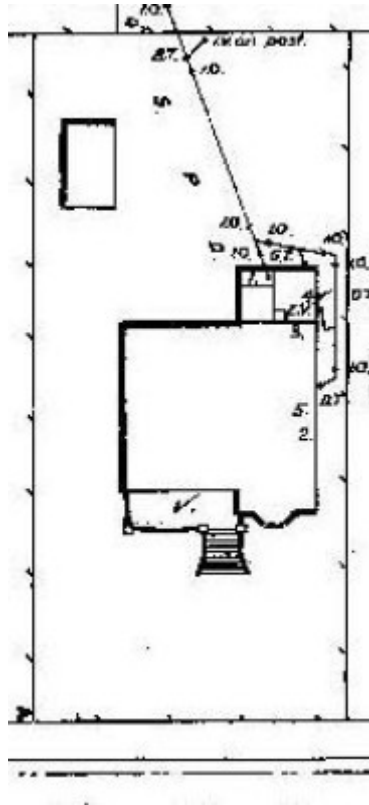


Dwelling



7 Upper Skene Street,
Newtown



GWST Drainage Plan no. 4578A, 19033, Barwon Water.

Location

7 Upper Skene Street NEWTOWN, GREATER GEELONG CITY

Municipality

GREATER GEELONG CITY

Level of significance

Incl in HO area contributory

Heritage Overlay Numbers

HO2005

Heritage Listing

Greater Geelong City

Statement of Significance

Last updated on -

Contributory Significance- Newtown West Heritage Area

History/Notes

The land at 7 Upper Skene Street initially formed part of larger landholding owned by Thomas Ryan from 1857. He built a dwelling on the eastern portion of his land (3 Upper Skene Street) at about this time. In 1926, the property had passed to Ryan's daughter, Miss Mary Ryan, and she proposed a four lot subdivision of the land. This portion of the landholdings did not sell at this time. On Miss Ryan's death in 1932, the land was subdivided and this site at 7 Upper Skene Street was sold to Campbell Dunoon, an accountant, in 1933. This house was built at this time, in anticipation of Dunoon's marriage to Miss Ellen Gertrude Zeris Martin in the same year.

The dwelling might have been designed by Donald C. Dunoon, retired architect.

Lewis Campbell Dunoon was born at Colac in 1903, the son of Donald C. Dunoon and Jessie Margaret (nee Reddie) Dunoon. Known as Campbell, Dunoon following the completion of his schooling in Colac, he passed the Melbourne University public examination in 1920, taking up the occupation of a clerk and then accountant. Dunoon was a avid golfer, playing in various tournaments. In 1938, he sold the property at 7 Upper Skene Street to his mother, Jessie. She leased it to Norman N. King, engineer, until it was transferred back to L.C. Dunoon in 1951. By this time he was a wool expert. It might have also been at this time when Dunoon married Nancy Elizabeth Noble, a nurse. He sold the Upper Skene property to Henry H. Koop, a farmer. Dunoon died in 2002 aged 86.

The single storey, timber interwar Bungalow styled dwelling is predominantly intact as shown in the main gabled roof form that traverses the site and the verandah gable at the rear. There is also an early minor gable at the rear. Other original features include the brick verandah piers and balustrade, entrance steps, gable infill, faceted, flat-roofed bay window, broad eaves, timber framed double hung windows (with leadlighted upper sashes) and the timber framed double entrance doors. At the front is an introduced timber picket fence.

References:

Land Application 47386, General Law Library, Laverton.

Victorian Births, Deaths & Marriages Indexes, Dept. of Justice.

Newtown Rate Books, 1930-1950, Geelong Library & Heritage Centre.

Newtown Building Permit, 1933, City of Greater Geelong.

The Argus, 28 April 1910, p.8, 2 March 1922, p.10, 20 November 1941, 30 November 1937, 22 July 1953.

Geelong Advertiser, 21 February 1920, 24 April 1939.

Certificates of Title, vol. 5455, fol. 937, vol. 5827, fol. 268.

Land Application 47686, General Law Library, Laverton.

Heritage Study/Consultant	Greater Geelong - Newtown West Heritage Review 2016, D. Rowe & W. Jacobs, 2016;
Hermes Number	199401
Property Number	

This place/object may be included in the Victorian Heritage Register pursuant to the Heritage Act 2017. Check the Victorian Heritage Database, selecting 'Heritage Victoria' as the place source.

For further details about Heritage Overlay places, contact the relevant local council or go to Planning Schemes Online <http://planningschemes.dpcd.vic.gov.au/>